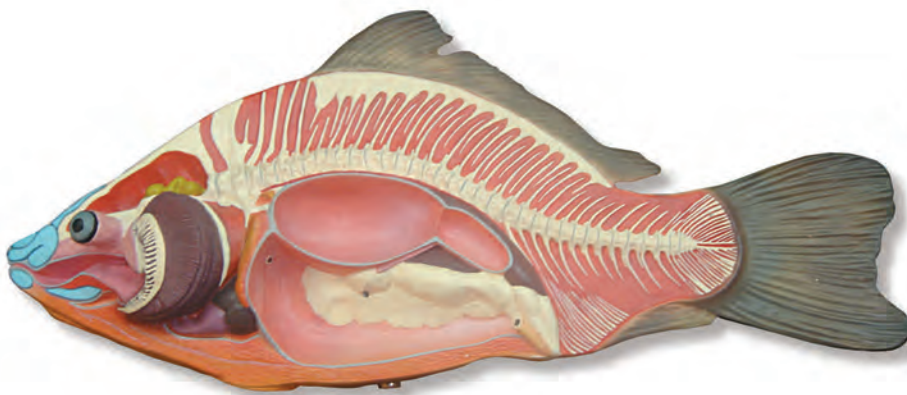


# ANATOMY

## ANIMAL ORGANOGRAPHY



# ANIMAL ORGANOGRAPHY



CA-39

## Carp

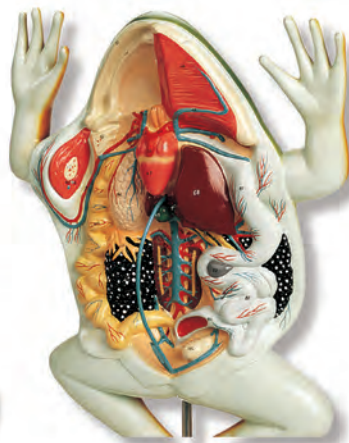
Modeled from a natural size carp. One side shows the form and colouring of a carp, the other the skeleton and topography of the intestines and gills. Intestines, air-bladder and testicles removable. Separates into 4 parts. Mounted on stand with base and explanation. Supplied with a detailed manual and CD Rom. Dimensions: 35 x 50 x 16 cm. Sh. wt. 1,50 Kgs.



AC-10

## Animal cell

A highly magnified representation of a typical and generalized animal cell, showing both microscopic and ultramicroscopic detail. The structures are shown in section and in relief. Supplied with manual. Dimensions: 23 x 10 x 28 cm. Sh. wt. 2,10 Kgs.



RA-80

## Bullfrog Junior

Won't Swamp Your Budget Scaled-down somewhat from the Bullfrog, our just-over-life-size adult female Bullfrog Junior embodies the same attention to fine anatomic detail and rugged American-made quality, but is intended to keep your head above water - budget-wise. Life-like sculpting and vibrant hand-painting faithfully portray the same ten organ systems found in its big sister, but with fewer numbered features and no detachable parts.

Molded of non-breakable vinyl plastic, Bullfrog Junior lifts off its hardwood stand for hands-on pass-around study. Hand-numbered features - more than 100 in all - are identified in the accompanying key which also includes a fully-labeled illustration of the reproductive system of a male frog. Dimensions: 43 x 30 x 10 cm.

# ANIMAL ORGANOGRAPHY



**AB-40**  
**Amoeba. A three dimensional model**

A three dimensional model (sagittal section) enlarged 1500 times. Not removable from base. Board showing detailed structure. Key card included. Mounted on base.  
Dimensions: 41 x 31 x 21 cm. Sh. wt. 1,50 Kgs.



**IT-90**  
**Earth worm**

Highly magnified earth worm model. Dissection of the anterior portion showing the digestive, circulatory and nervous systems and internal organs. On stand with base.  
Dimensions: 60 x 33 x 8 cm. Sh. wt. 2,50 Kgs.



**RA-90**  
**The Bullfrog**

This vinyl plastic replica of a sexually mature female bullfrog, *Rana catesbeiana*, establishes a new standard for zoological models. The first practical alternative to dissection of natural specimens • Featuring a dissectible, highly-detailed 3-chambered heart • Twice life-size for ease of study • Ten organ-systems are faithfully portrayed • Separates into 4 parts

This vinyl plastic replica of a sexually mature female bullfrog, *Rana catesbeiana*, establishes a new standard for zoological models. Including even such fine points as internal nares, vomerine teeth, eustachian tube, and the nictitating membrane of the eye, students are encouraged to compare the frog body plan and organ systems with those of the human and other vertebrates.

Special emphasis has been placed on the amphibian 3-chambered heart. This is the ONLY frog model with a detachable heart which opens. Fully dissected the ventral aspect exposes all the viscera, the buccal cavity, and the musculature of the hind leg. Half of the mandible, tongue, and glottis, remove as a unit for detailed study. Strategic cutaways of internal organs reveal the bronchi of the lung, stomach rugae, and the lumen of the large intestine. Multi-level dissections of the dorsal aspect expose the brain and nervous system, the eye and optic nerve, the ear - with cutaway through the tympanum revealing the columella and eustachian tube - and all the bones of the left side.

Non-breakable, the bullfrog detaches from its hardwood base for hands-on examination. More than 175 hand-numbered features are identified in the accompanying key, which also illustrates the male reproductive system.

Dimensions 53 x 38 x 10 cm.

**Avda. Sistema Solar, 13 – Nave 11  
28830 San Fernando de Henares  
Madrid**

**Telf. +34 918 328 318  
Telf. móvil: +34 657 783 403**

**email: [info@simulacionessanitarias.com](mailto:info@simulacionessanitarias.com)  
<http://www.simulacionessanitarias.com>**