

ANATOMY

FARM ANIMAL

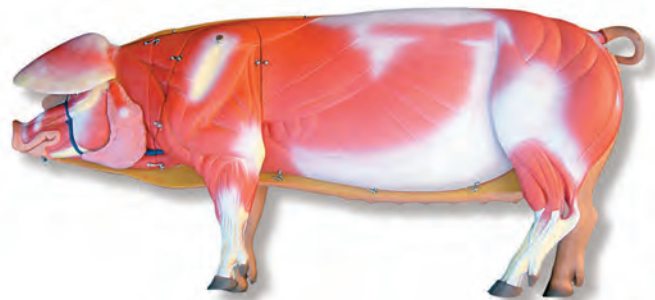
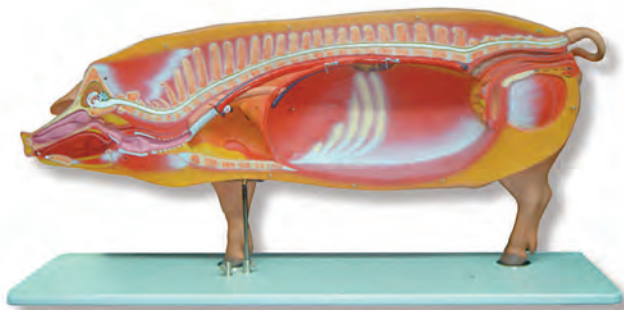


FARM ANIMAL



CA-69
Horse

Horse model 1/2 natural size includes 3 removable parts. This model shows a cut at the horizontal median section. One side shows the skin, while opposite side shows an internal view of the skeleton with topography of the thoracic and abdominal organs. One set of bony limbs (fore and hind limbs) are removable. Mounted on a base. Made of PVC (Plastisol), high endurance. Painted with non toxic paintings. Supplied with a detailed manual and CD Rom. Dimensions (aprox.): 60 x 70 x 22 cm. Sh. wt. 4,00 Kgs.



CE-99
Pig

Breeding pig approximately 1/2 natural size. Right side shows the skin, the other side shows the muscular system. The model is mounted on a base which can be pulled out and is detachable in two halves through the median line. The left half of the head showing the muscular system, the main blood-vessels and glands (the parotid gland can be removed) as well as the auricular cartilage is removable as is the left front leg. After separating both halves, the left side shows the thoracic and abdominal cover, the right side the thoracic and abdominal organs. The model separates altogether into 17 parts: the right half of body, left half of body, left half of head, parotid gland, left front leg, half of lungs, heart (2), liver, stomach (2), pancreas, small intestine, large intestine, renal fat and half of uterus. Supplied with a detailed manual and CD Rom. Dimensions: 50 x 100 x 25 cm. Sh. wt. 20,00 Kgs.



FARM ANIMAL



GA-90
Domestic chicken.

Natural size. Modeled from a natural skeleton. The right side shows the feathers the left side the organs. By a simple operation the torso can be taken from the feathers to show the muscular system. The internal organs are removable as follows: left lung, part of the liver, stomach. 7 total parts. Mounted on base. Supplied with a detailed manual and CD Rom. Dimensions: 50 x 46 x 27 cm. Sh. wt. 4,00 Kgs.



VA-95
Cow

Approximately $\frac{1}{3}$ natural size. Median section, divisible in two halves. The left side shows the hide, the right side shows the surface muscular system. Right foreleg with shoulder-blade and the biceps of the thigh are removable. The udder shows suspension, network of blood- and lymphatic vessels. The organs are removable as follows: Lungs, heart (2), small and large intestine, ruminant stomach, uterus and half of the udder. 14 total parts. Mounted on a removable base with rollers. Supplied with a detailed manual and CD Rom. Dimensions: 56 x 87 x 27 cm. Sh. wt. 17,00 Kgs.

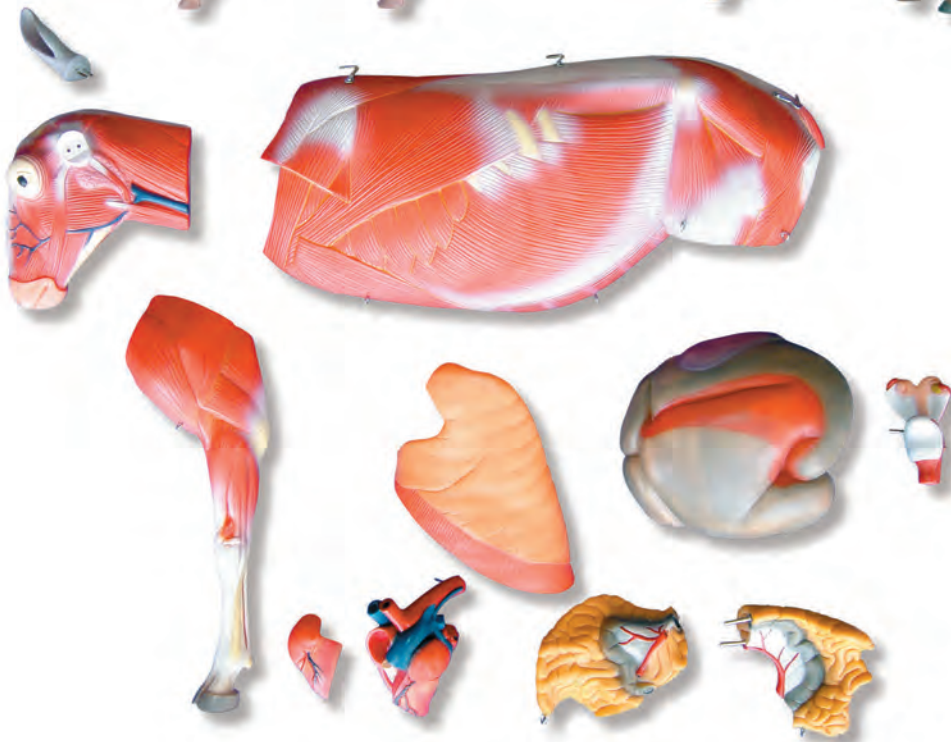
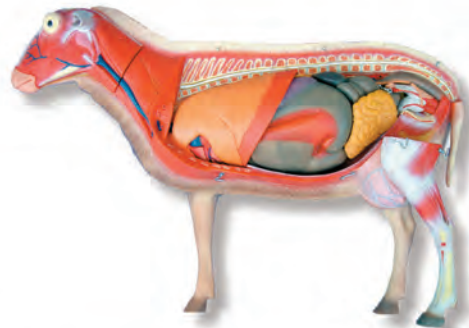
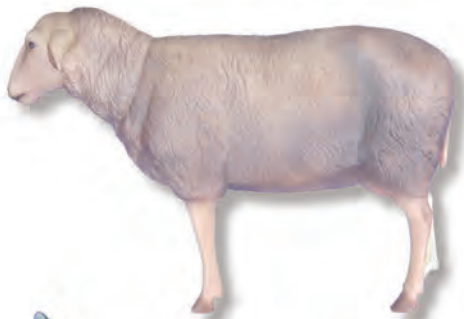
FARM ANIMAL



CO-44 Rabbit

Domestic Rabbit, natural size. Divisible en two halves through the median section, the right side shows the pelt, the left half the muscular system and the topography of the thoracic and abdominal intestines which are removable. Separates into 12 parts. Mounted on base. Supplied with a detailed manual and CD Rom.

Dimensions: 35 x 50 x 22 cm. Sh. wt. 5,00 Kgs.



OV-84 Sheep model

Sheep model, $\frac{2}{3}$ natural size of an adult sheep, 11 removable parts. This model shows a cut at the horizontal median section that divides it into two sides. One side shows the skin, the opposite side shows muscular system. A foreleg and a section of the head are removable. By removing abdominal wall, topography of the thoracic and abdominal organs are shown. Removable organs are: section of lung, heart (2 parts), stomach, small intestine (2 parts) and uterus. Mounted on a base. Made of PVC (Plastisol), high endurance. Painted with non toxic paintings. Supplied with a detailed manual and CD Rom.

Dimensions: 50 x 70 x 28 cm. Sh. wt. 18,00 Kgs.

**Avda. Sistema Solar, 13 – Nave 11
28830 San Fernando de Henares
Madrid**

**Telf. +34 918 328 318
Telf. móvil: +34 657 783 403**

**email: info@simulacionessanitarias.com
<http://www.simulacionessanitarias.com>**