

# ANATOMY

## SKELETONS



# MALE HUMAN SKELETONS

NATURAL SIZE

STANDARD MODELS WITH THE RIGID SPINAL COLUMN • MANUFACTURED IN UNBREAKABLE PVC • HEIGHT 175 cm.



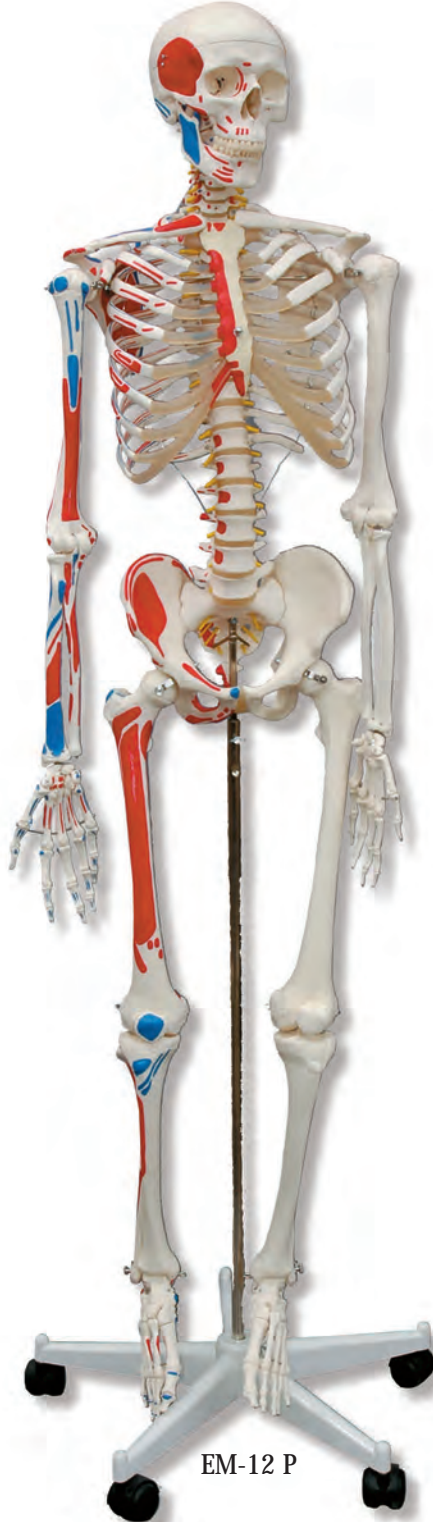
EM-10 P

EM-10

## Human Skeleton.

This model reproduces the bones fissures and anatomical details. It contains a 3 part removable skull, (skull-cap, skull base and jaw); and the structure of the trunk skeleton has a reinforced thoracic cage to prevent deformations. The upper and lower extremities are removable and the joints are movable. A protection cover is included.

Dimensions: 91 x 51 x 23 cm. Sh. wt. 10 Kgs.



EM-12 P

EM-12

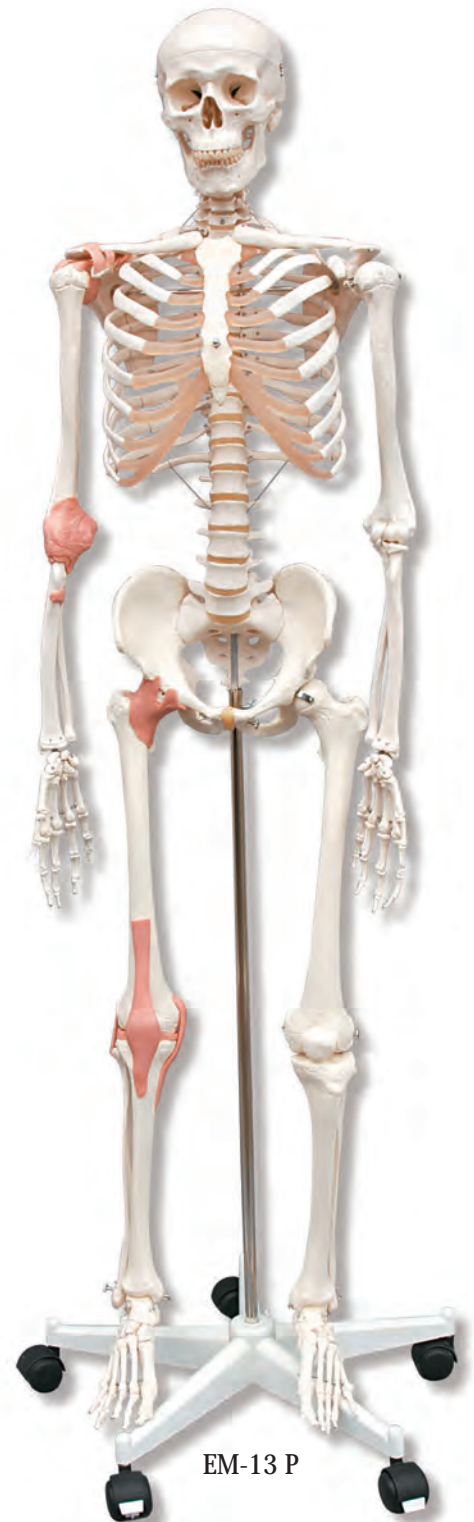
## Human Skeleton, key card included.

Same as model EM-10, although it includes hand painted muscle origins and insertions. Dimension: 91 x 51 x 23 cm. Sh. wt. 10.50 Kgs.

EM-11

## Human Skeleton,

This model is the same as EM-10, although it includes a key card. (Not illustrated) Dimension: 91 x 51 x 23 cm. Sh. wt. 10 Kgs.



EM-13 P

EM-13

## Human Skeleton, key card included.

Same as model EM-10, although the shoulder, elbow, hip and knee ligaments are added. Dimension: 91 x 51 x 23 cm. Sh. wt. 10.80 Kgs.



# MALE HUMAN SKELETONS

NATURAL SIZE

STANDARD MODELS WITH FLEXIBLE SPINAL COLUMN • MANUFACTURED IN UNBREAKABLE PVC • HEIGHT 175 cm.



EM-16 P

EM-16

**Human skeleton, key card included.**

Standard skeleton with detachable skull, full movement of the neck joint. The vertebral column is designed to adapt its natural curvatures and it is flexible, allowing the vertebrae and discs movements, which facilitates the proper mobility and the simulations of pathologic and specific situations. The peripheral nervous roots and the vertebral arteries can be observed, as well as a hernia in the dorso-lateral disc between the 3rd and the 4th lumbar vertebra. Dimension: 91 x 51 x 23 cm. Sh. wt. 10.30 Kgs.

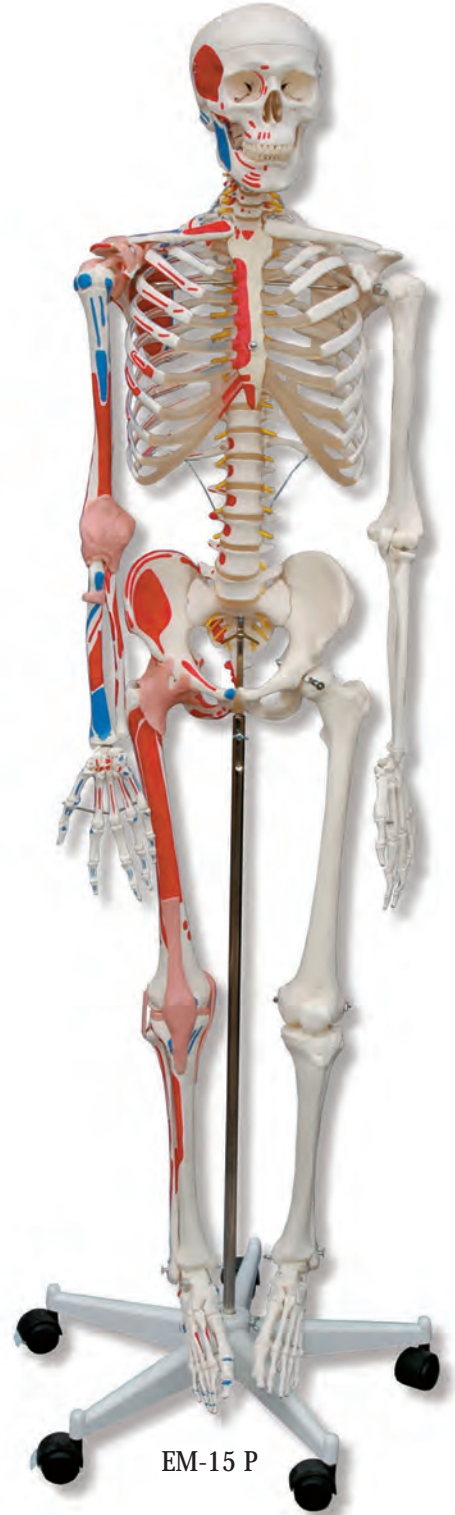


EM-14 P

EM-14

**Human skeleton, key card included.**

Same as model EM-16, although the shoulder, elbow, hip and knee ligaments are added. Dimension: 91 x 51 x 23 cm. Sh. wt. 10.80 Kgs.



EM-15 P

EM-15

**Human skeleton, key card included.**

Same as model EM-14, although it includes hand painted muscle origins and insertions. Dimension: 91 x 51 x 23 cm. Sh. wt. 11,00 Kgs.

ALL WEIGHTS AND DIMENSIONS ARE FOR THE CONFIGURATION USING SUPPORT BASE "P".  
UPON REQUEST WE CAN MANUFACTURE FEMALE SKELETONS.

# MALE HUMAN SKELETONS

## SUPPORT STAND



**Stand P-4**  
Support stand with 4 wheels.  
Only valid for skeleton model EM-10.

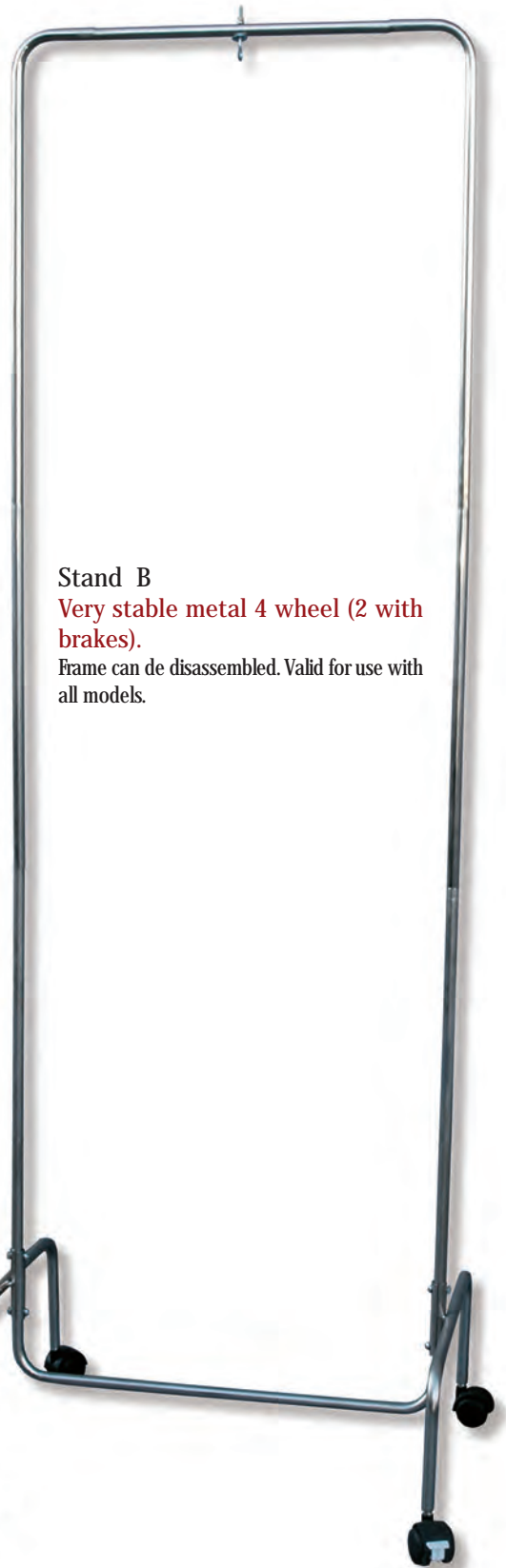


**Stand P-5**  
Support stand with 5 wheels (2 with brakes).  
Valid for use with all models, with the exception of EM-10.

**Stand S**  
Support stand with 5 wheels (3 with brakes).  
That supports the skeleton by the skull. Valid for use with all models.



**Stand B**  
Very stable metal 4 wheel (2 with brakes).  
Frame can be disassembled. Valid for use with all models.



REFER TO WEBSITE FOR DIMENSIONS AND WEIGHT OF EACH SKELETON MODEL.



# MALE HUMAN SKELETONS

## REDUCED SIZE

STANDARD SKELETON MODELS WITH FLEXIBLE SPINAL COLUMN • MANUFACTURED IN UNBREAKABLE PVC



### EP-10 B

#### Human Skeleton, key card included.

This model reproduces the bones fissures and anatomical details. It contains a 3 part removable skull, (skull-cap, skull base and jaw); and the structure of the trunk skeleton has a reinforced thoracic cage to prevent deformations. The upper and lower extremities are removable and the joints are movable. Mounted on base with stand.

The height of the model without the stand is 83 cm.

Dimensions: 53 x 37 x 30 cm.

Sh. wt. 2.60 Kgs.

### EP-10 S

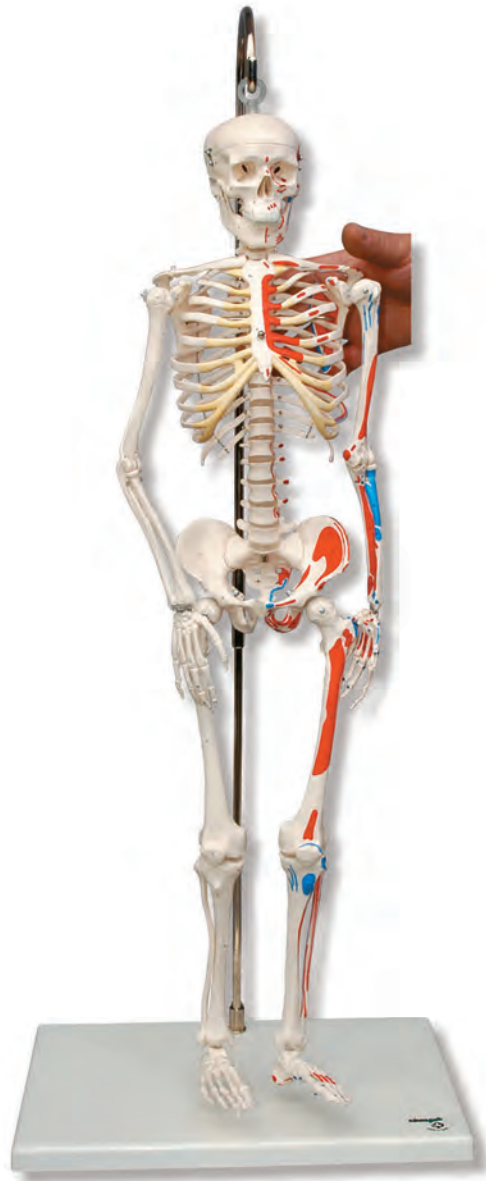
#### Human Skeleton, key card included.

This model reproduces the bones fissures and anatomical details. It contains a 3 part removable skull, (skull-cap, skull base and jaw); and the structure of the trunk skeleton has a reinforced thoracic cage to prevent deformations. The upper and lower extremities are removable and the joints are movable. Mounted on base with stand and suspended by the head.

The height of the model without the stand is 83 cm (not illustrated).

Dimensions: 53 x 37 x 30 cm.

Sh. wt. 2.70 Kgs.



### EP-15 S

#### Human Skeleton, key card included.

Standard skeleton with detachable skull, full movement of the neck joint. The vertebral column is designed to adapt its natural curvatures and it is flexible, allowing the vertebrae and discs movements, which facilitates the proper mobility and the simulations of pathologic and specific situations. The peripheral nervous roots and the vertebral arteries can be observed, as well as a hernia in the dorso-lateral disc between the 3rd and the 4th lumbar vertebra. Mounted on base with stand. The height of the model without the stand is 83 cm. Dimension: 53 x 37 x 30 cm. Sh. wt. 2.70 Kgs.

### EP-15 B

#### Human Skeleton, key card included.

Standard skeleton with detachable skull, full movement of the neck joint. The vertebral column is designed to adapt its natural curvatures and it is flexible, allowing the vertebrae and discs movements, which facilitates the proper mobility and the simulations of pathologic and specific situations. The peripheral nervous roots and the vertebral arteries can be observed, as well as a hernia in the dorso-lateral disc between the 3rd and the 4th lumbar vertebra. Mounted on base with stand. The height of the model without the stand is 83 cm. (not illustrated)

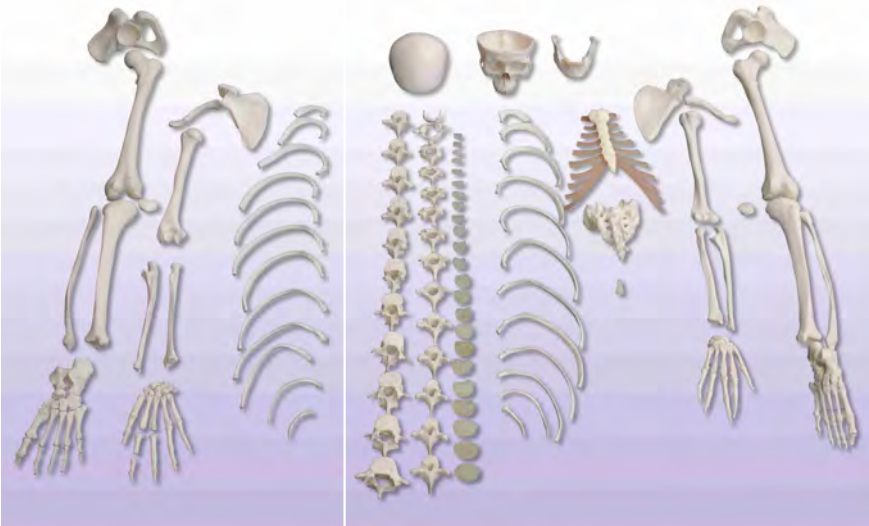
Dimension: 53 x 37 x 30 cm. Sh. wt. 2.60 Kgs.

FOR HIGHER QUANTITIES WE CAN SELL SEPARATE PARTS

# DISARTICULATED SKELETONS

ADULT STANDARD NATURAL SIZE • MANUFACTURED IN PVC

EM-05



EM-05

**Male skeleton, key card included.**

This model reproduces the bones fissures and details. All bones are supplied disarticulated, with the exception of the skull, one hand and foot. Storage box included. Dimensions: 50 x 44 x 28 cm. Sh. wt. 4,36 Kgs.

EM-06

**Male skeleton, key card included.**

Same as model EM-05, although all bones are disarticulated. Storage box included. (not illustrated). Dimensions: 50 x 44 x 28 cm. Sh. wt. 4,10 Kgs.

Mod. EM-04

**Half male skeleton, key card included.**

This model reproduces the bones fissures and details. All bones are supplied disarticulated, with the exception of the skull, one hand and foot. Discs, vertebrae and sacrum are also included. Dimensions: 50 x 44 x 28 cm. Sh. wt. 3,30 Kgs.

EM-04

EM-07

Mod. EM-07

**Male skeleton, key card included.**

This model reproduces the bones fissures and details. Bones are threaded on wire, hand painted muscle origins and insertions. All bones are supplied disarticulated, with the exception of the skull, one hand and foot. Dimensions: 50 x 44 x 28 cm. Sh. wt. 4,40 Kgs.

EM-08

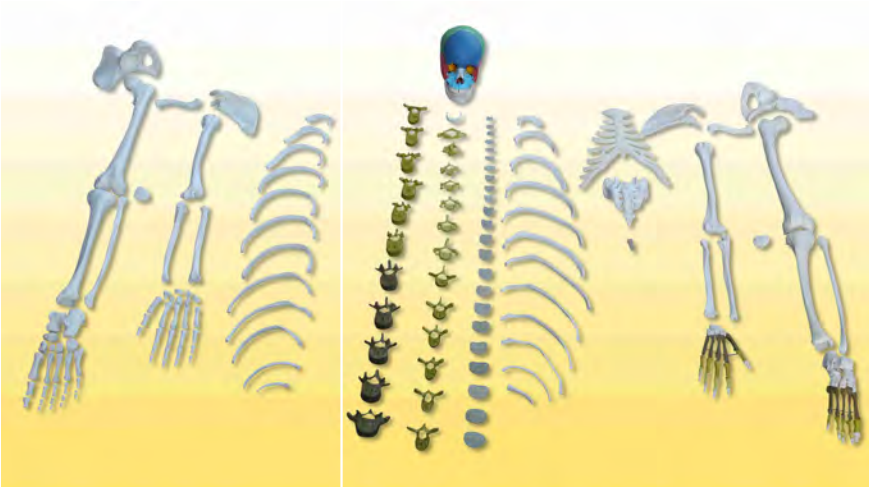
**Half male skeleton, key card included.**

This model reproduces the bones fissures and details. Bones are threaded on wire, hand painted muscle origins and insertions. All bones are supplied disarticulated, with the exception of the 3 part skull, one hand and foot. Dimensions: 50 x 44 x 28 cm. Sh. wt. 3,50 Kgs.



EM-08

EM-09



EM-09

**Male skeleton, key card included.**

This model reproduces the bones fissures and details. Didactic. All bones are supplied disarticulated, with the exception of the 3 part skull, one hand and foot. Storage box included. Dimensions: 50 x 44 x 28 cm. Sh. wt. 4,40 Kgs.

EM-01

**Half Male skeleton, Key card included.**

This model reproduces the bones fissures and details. Didactic. All bones are supplied disarticulated, with the exception of the 3 part skull, one hand and foot. Storage box included. Dimension: 50 x 44 x 28 cm. Sh. wt. 4,40 kgs.

EM-01

CUSTOM CONFORMATIONS ARE AVAILABLE UPON RESQUEST

**Avda. Sistema Solar, 13 – Nave 11  
28830 San Fernando de Henares  
Madrid**

**Telf. +34 918 328 318  
Telf. móvil: +34 657 783 403**

**email: [info@simulacionessanitarias.com](mailto:info@simulacionessanitarias.com)  
<http://www.simulacionessanitarias.com>**