

ANATOMY

VERTEBRAL MODELS



VERTEBRAL MODELS

NATURAL SIZE



VC-64
Cervical spinal column, 8 parts, key card included.

Consisting of occipital plate, the 7 cervical vertebrae with intervertebral discs, cervical nerves, vertebral arteries and spinal cord. Mounted on stand with base.

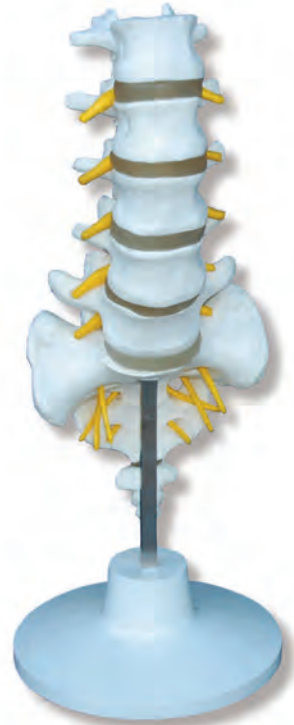
Dimensions: 15 x 15 x 20 cm. Sh. wt. 0.54 Kgs.



VD-85
Thoracic spinal column, 12 parts, key card included.

Consisting of the 12 thoracic vertebrae with intervertebral discs, thoracic nerves and spinal cord. Mounted on stand with base.

Dimensions: 15 x 15 x 34 cm. Sh. wt. 0.84 Kgs.



VE-90
Lumbar spinal column, 17 parts, key card included.

Consisting of the 5 lumbar vertebrae with intervertebral discs, sacrum with flap, coccyx, spinal nerves and dura mater of spinal cord. Mounted on stand with base.

Dimensions: 15 x 15 x 36 cm. Sh. wt. 0.91 Kgs.



VH-70
Lumbar spinal column, 13 parts, key card included.

Dorsal lateral prolapsed intervertebral discs, sacrum with flap, coccyx, spinal nerves and dura mater of spinal cord. Mounted on stand with base.

Dimensions: 15 x 15 x 36 cm. Sh. wt. 0.91 Kgs.



VE-94
Lumbar spinal column, key card included.

Contains, L1-L5 with sacrum, full lumbar nerve with right side sacral nerve & sciatic branch with hemiated disc. Mounted on stand with base. Economical version.

Dimensions: 15 x 15 x 32 cm. Sh. wt. 0.72 Kgs.



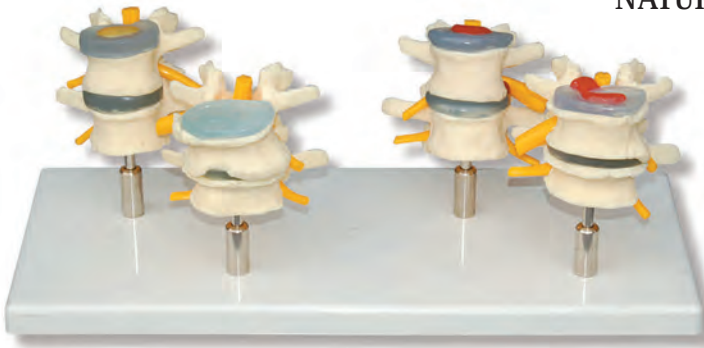
VM-76
Lumbar vertebrae, nerves and muscles, key card included.

Intervertebral discs L2, L3 and L4 with lumbar nerve section. Fully articulating model. Mounted on stand with base.

Dimensions: 11 x 11 x 15 cm. Sh. wt. 0.22 Kgs.

VERTEBRAL MODELS

NATURAL SIZE



VD-90
Demonstrates lumbar vertebrae degeneration, 4 parts, key card included.

Each model is comprised of two life-size Vertebrae. The first pair shows one set with normal anatomy and one with a "bulging" herniated disc. The second set of vertebrae shows one with bone and disc degeneration, and the 4th with advanced osteoporosis with marked bone compression and bone spurs. Mounted on stand with base. Dimensions: 37 x 20 x 15 cm. Sh. wt. 0.45 Kgs.



VS-11
Lumbar vertebrae with intervertebral discs (osteoporosis section), key card included.

Consisting of 3 medially divided lumbar vertebrae with intervertebral discs. For comparison, the upper section shows healthy bone structure, the middle section osteoporotic bone structure and the lower section advanced osteoporotic bone structure with flattened plates, deformation and decreased mass. For detailed study the vertebrae can be removed from the stand. Mounted on stand with base.

Dimensions: 20 x 20 x 22 cm.
Sh. wt. 0.36 Kgs.



VN-90
Stage 1 lumbar vertebrae, key card included.

Degeneration stage 1 (normal). This model shows vertebrae with normal anatomy. Mounted on stand with base. Dimensions: 11 x 11 x 15 cm. Sh. wt. 0.20 kgs.



VH-90
Stage 3 lumbar vertebrae, key card included.

Degeneration (herniated disc). This model shows vertebrae with a "building" herniated disc. Mounted on stand with base. Dimensions: 11 x 11 x 15 cm. Sh. wt. 0.20 Kgs.



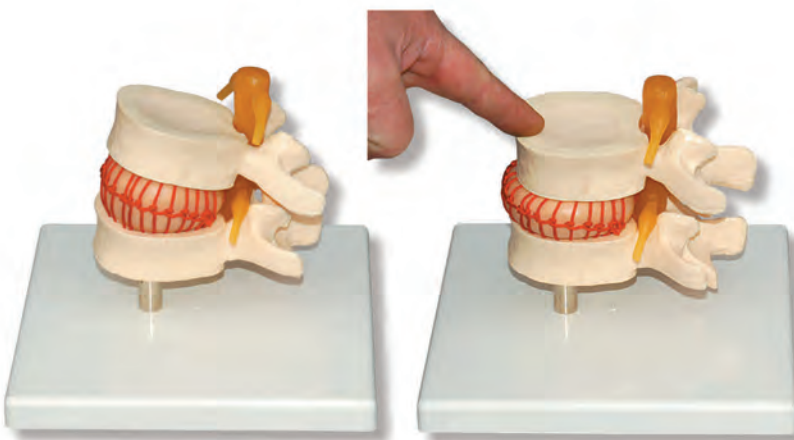
VB-90
Stage 2 lumbar vertebrae, key card included.

Degeneration (bone / disc degeneration). This model shows vertebrae with bone and disc degeneration. Mounted on stand with base. Dimensions: 11 x 11 x 15 cm. Sh. wt. 0.20 Kgs.



VA-90
Stage 4 lumbar vertebrae, key card included.

Degeneration (advanced osteoporosis). This model show vertebrae with advanced osteoporosis. Mounted on stand with base. Dimensions: 11 x 11 x 15 cm. Sh. wt. 0,20 Kgs.



CVH-93
Vertebral simulator, 2 times, key card included.

The model consists of 2 vertebrae, an elastic disc between them, the marrow and spinal nerves. This model demonstrates the injured mechanism of a herniated disc. The simulator demonstrates how the intervertebral disc prolapses when flexing the vertebrae, reproducing what happens in real life when we bend or twist our trunk. Since vertebral disorders are now very widespread, therapists should have this model to make people aware of the importance of proper movements of the spinal column. This model will be of great assistance in medicine, physiotherapy, medical surgeries and clinics, work risk prevention, ergonomics, physical education and other fields. Mounted on base.

Dimensions: 12 x 12 x 10 cm. Sh. wt. 0.60 Kgs.

VERTEBRAL MODELS

NATURAL SIZE



- 1** VE-75
Set of vertebrae. Set includes 1st, 2nd and 6th cervical vertebrae.
Mounted on stand with base.
Dimensions: 12 x 12 x 27 cm. Sh. wt. 0.50 Kgs.
- 2** VE-80
Set of cervical vertebrae and intervertebral discs.
Mounted on stand with base.
Dimensions: 12 x 12 x 20 cm. Sh. wt. 0.40 Kgs.
- 3** VLM-05
Set of thoracic vertebrae and intervertebral discs.
Mounted on stand with base.
Dimensions: 12 x 12 x 14 cm. Sh. wt. 0.71 Kgs.
- 4** VE-84
Set of lumbar vertebrae and intervertebral discs.
Mounted on stand with base.
Dimensions: 12 x 12 x 27 cm. Sh. wt. 0.50 Kgs.
- 5** VE-71
Set of 1st. and 2nd cervical vertebrae, dissectible.
Mounted on stand with base.
Dimensions: 12x 12 x 15 cm. Sh. wt. 0.50 Kgs.
- 6** VE-74
Set of 1st. and 2nd. cervical vertebrae, with detachable occipital bone.
Mounted on stand with base.
Dimensions: 12 x 12 x 20 cm. Sh. wt. 0.40 Kgs.
- 7** VE-79
Hyoid bone.
Mounted on stand with base.
Dimensions: 12 x 12 x 15 cm. Sh. wt. 0.14 Kgs.
- 8** VE-86
Set of sacrum/coccyx vertebrae.
Mounted on stand with base.
Dimensions: 15 x 12 x 20 cm. Sh. wt. 0.36 Kgs.
- 9** VE-87
Set of sacrum / coccyx vertebrae.
Dimensions: 15 x 10 x 15 cm. Sh. wt. 0.27 Kgs.
- 10** VLM-02
Set of 2 lumbar vertebrae and 1 disc.
Mounted on base. (not illustrated)
Dimensions: 12 x 12 x 10 cm. Sh. wt. 0.15 Kgs.
- 11** VE-81
Set of cervical vertebrae.
This model is supplied unmounted (the vertebrae are loose)
Dimensions: 20 x 10 x 5 cm. Sh. wt. 0.28 Kgs.
- 12** VE-83
Set of thoracic vertebrae.
This model is supplied unmounted (the vertebrae are loose)
Dimensions: 20 x 20 x 10 cm. Sh. wt. 0.58 Kgs.
- 13** VE-85
Set of lumbar vertebrae.
This model is supplied unmounted, (the vertebrae are loose)
Dimensions: 20 x 20 x 10 cm. Sh. wt. 0.30 Kgs.

CUSTOM CONFORMATIONS ARE AVAILABLE UPON RESQUEST

**Avda. Sistema Solar, 13 – Nave 11
28830 San Fernando de Henares
Madrid**

**Telf. +34 918 328 318
Telf. móvil: +34 657 783 403**

**email: info@simulacionessanitarias.com
<http://www.simulacionessanitarias.com>**