

# ANATOMY

## JOINTS



# JOINTS

## (NATURAL SIZE) FUNCTIONAL MODELS

**AO-60**  
**Shoulder joint (Humerus), functional model.**  
 Mounted on stand with base.  
 Dimensions: 15 x 15 x 20 cm.  
 Sh. wt. 0.45 Kgs.



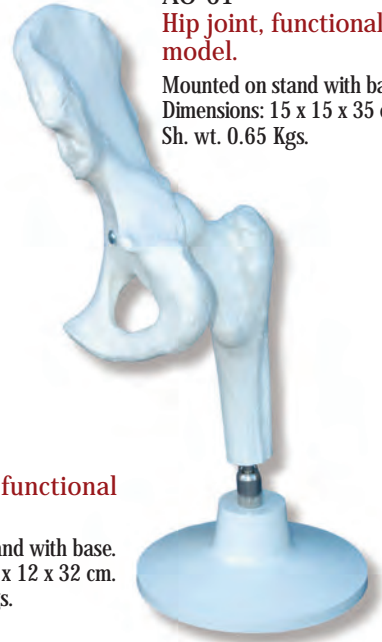
**AO-63**  
**Elbow joint, functional model.**  
 Mounted on stand with base.  
 Dimensions: 12 x 12 x 38 cm.  
 Sh. wt. 0.65 Kgs.



**AO-62**  
**Knee joint, functional model.**  
 Mounted on stand with base.  
 Dimensions: 12 x 12 x 32 cm.  
 Sh. wt. 0.50 Kgs.



**AO-61**  
**Hip joint, functional model.**  
 Mounted on stand with base.  
 Dimensions: 15 x 15 x 35 cm.  
 Sh. wt. 0.65 Kgs.



## (NATURAL SIZE) MODELS INCLUDE FLEXIBLE LIGAMENTS

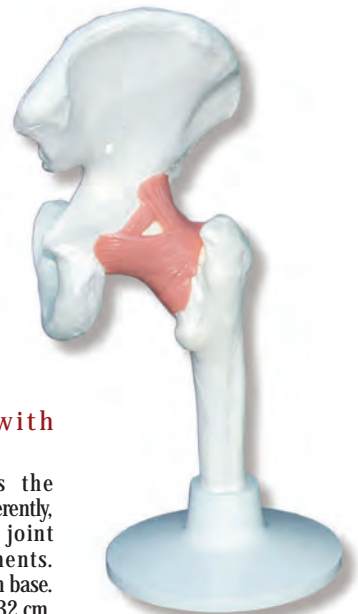
**AL-80**  
**Shoulder joint ligaments (Humerus).**  
 This model allows the ligaments to move differently, according to the joint anatomical movements. Mounted on stand with base. Dimensions: 15 x 15 x 20 cm. Sh. wt. 0.55 Kgs.



**AL-83**  
**Elbow joint with ligaments.**  
 This model allows the ligaments to move differently, according to the joint anatomical movements. Mounted on stand with base. Dimensions: 12 x 12 x 38 cm. Sh. wt. 0.67 Kgs.



**AL-81**  
**Hip joint with ligaments.**  
 This model allows the ligaments to move differently, according to the joint anatomical movements. Mounted on stand with base. Dimensions: 15 x 15 x 35 cm. Sh. wt. 0.74 Kgs.



**AL-82**  
**Knee joint with ligaments.**  
 This model allows the ligaments to move differently, according to the joint anatomical movements. Mounted on stand with base. Dimensions: 12 x 12 x 32 cm. Sh. wt. 0.59 Kgs.



# JOINTS

## (NATURAL SIZE) JOINTS WITH LIGAMENTS



**AZ-80**  
**Shoulder joint model, key card included.**  
 Model includes: clavicle, humerus and scapula bones; articular capsule ligament; teres minor tendon; plus 11 additional ligaments and tendons. Mounted on stand with base. Dimensions: 20 x 20 x 15 cm. Sh. wt. 0.51 Kgs.



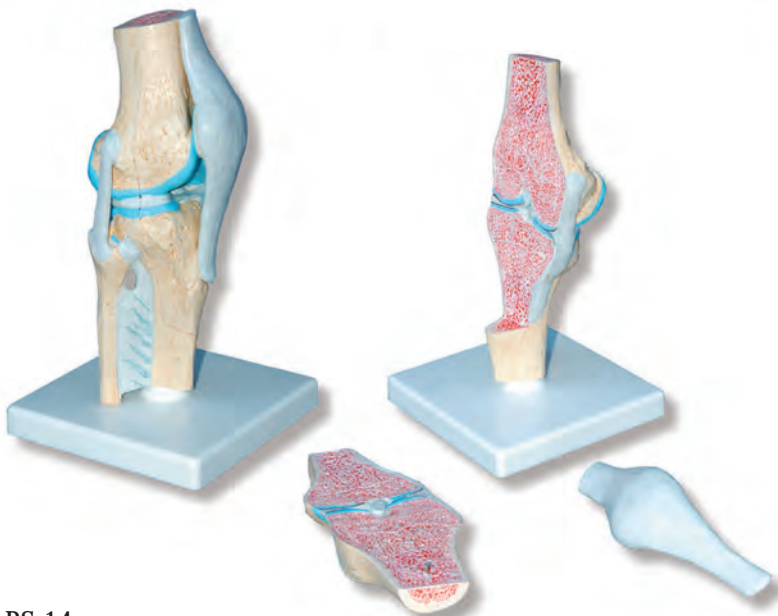
**AZ-83**  
**Elbow joint model, key card included.**  
 Elbow bone model includes: humerus, radius and ulna bones; joint capsule; annular ligament of radius, oblique cord, radial collateral and ulnar collateral ligaments. Mounted on stand with base. Dimensions: 20 x 20 x 22 cm. Sh. wt. 0.59 Kgs.



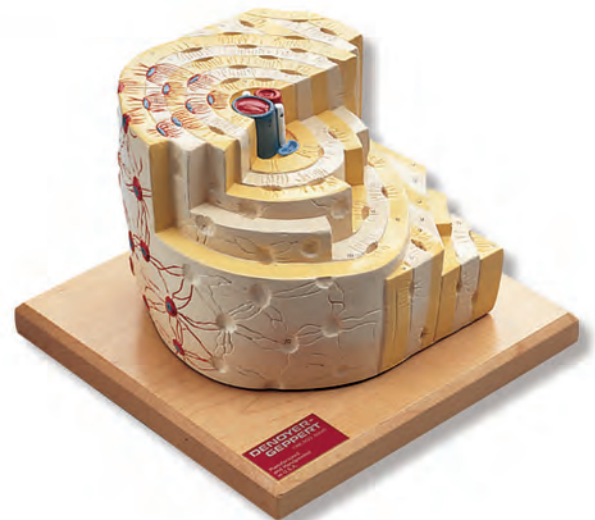
**AZ-82**  
**Knee joint model, key card included.**  
 Knee includes: femur, fibula, patella and tibia bones; lateral and medial meniscus; quadriceps femoris tendon; anterior cruciate, fibular and tibial collateral, patellar and posterior menisofemoral ligaments. Mounted on stand with base. Dimensions: 20 x 20 x 15 cm. Sh. wt. 0.53 Kgs.



**AZ-81**  
**Hip joint model, key card included.**  
 Femur includes: articular capsule of the hip joint; greater and lesser trochanter; ilium, ischial spine, ischial tuberosity, ischium and pubis bones. Mounted on stand with base. Dimensions: 20 x 20 x 15 cm. Sh. wt. 0.62 Kgs.



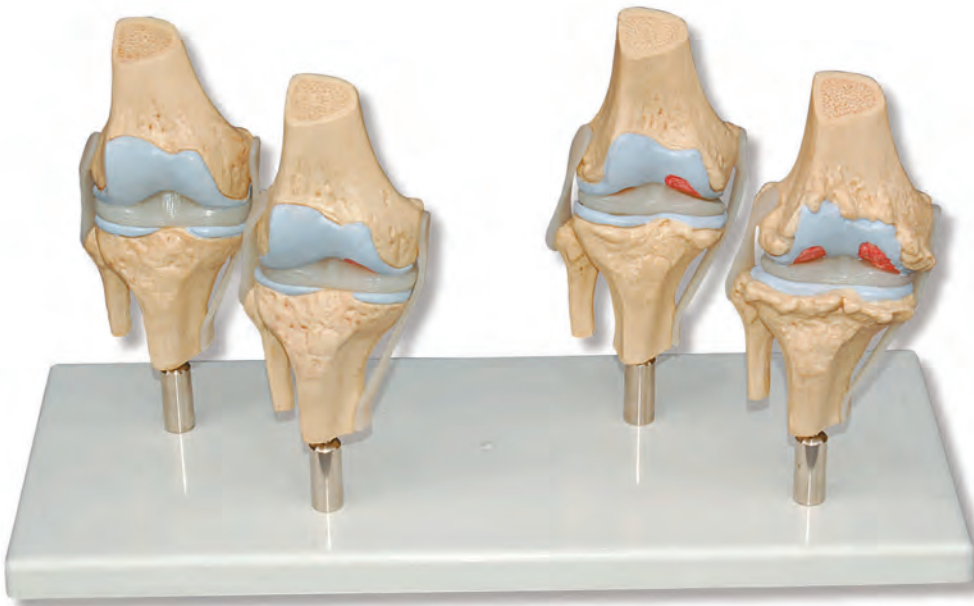
**RS-14**  
**Knee joint, 3 parts, (sectional), key card included.**  
 This model can be used to demonstrate various disorders of the human knee joint (articulatio genus) and their respective therapies in a graphic way. The model shows a natural-sized, healthy right knee joint in upright position, including parts of the femur, tibia and fibula as well as the ligament system and the patella with part of the femoral tendon. The patella and attached tendon and the front half of the model (which is frontally sectioned) can be detached to reveal the internal structures. Mounted on stand with base. Dimensions: 15 x 15 x 25 cm. Sh. wt. 0.60 Kgs.



**DH-73**  
**Bone structure 500 times, key card included.**  
 This hand-painted model shows one complete haversian system and a portion of two others in cross-section. Lamellae are cut away at various depths in setp-wise fashion. Mounted on stand with base. Dimensions: 15 x 15 x 18 cm. Sh. wt. 0.40 Kgs.

# JOINTS

## (NATURAL SIZE) JOINT WITH LIGAMENTS



VR-70

**Osteoarthritis Knee set, 4 parts, key card included.**

This model includes: illustrating: degenerative joint disease (osteoarthritis); Erosion to joint articular cartilage; Progression of degenerative joint disease; Osteophytes (bone spurs) at the articular surfaces. Mounted on stand with base. Dimensions: 37 x 20 x 15 cm. Sh. wt. 0.83 Kgs.



RN-80

**Degenerative joint disease (1st stage) normal knee, key card included.**

Mounted on stand with base. Dimensions: 12 x 12 x 16 cm. Sh. wt. 0.30 Kgs.



RE-80

**Degenerative joint disease (2nd stage) early knee, articular cartilage erosion, key card included.**

Mounted on stand with base. Dimensions: 12 x 12 x 16 cm. Sh. wt. 0.30 Kgs.



RM-80

**Degenerative joint disease (3rd stage) moderate knee, articular cartilage erosion, key card included.**

Mounted on stand with base. Dimensions: 12 x 12 x 16 cm. Sh. wt. 0.30 Kgs.



RA-80

**Degenerative joint disease (4th stage) advanced knee, articular cartilage erosion, key card included.**

Mounted on stand with base. Dimensions: 12 x 12 x 16 cm. Sh. wt. 0.30 Kgs.

**Avda. Sistema Solar, 13 – Nave 11  
28830 San Fernando de Henares  
Madrid**

**Telf. +34 918 328 318  
Telf. móvil: +34 657 783 403**

**email: [info@simulacionessanitarias.com](mailto:info@simulacionessanitarias.com)  
<http://www.simulacionessanitarias.com>**