

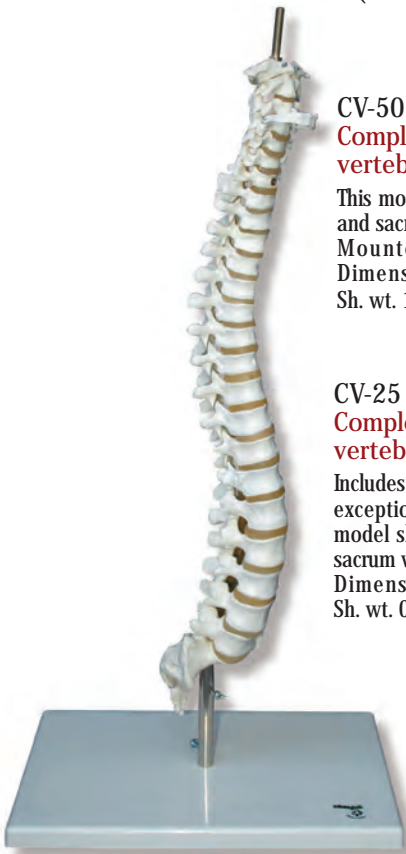
# ANATOMY

## VERTEBRAL COLUMN AND THORACIC CAGES



# VERTEBRAL COLUMN AND THORACIC CAGES

## (NATURAL SIZE) NON-FLEXIBLE SPINAL COLUMNS

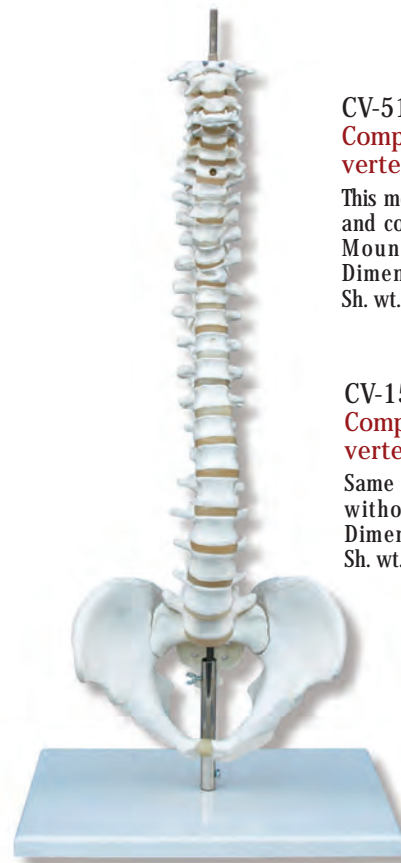


**CV-50**  
**Complete bony structure of the vertebral column.**

This model shows the vertebrae, discs and sacrum with apophysis. Mounted on stand with base. Dimensions: 75 x 44 x 15 cm. Sh. wt. 1,20 Kgs.

**CV-25**  
**Complete bony structure of the vertebral column.**

Includes all features of CV-50, with the exception of a stand with base. This model shows the vertebrae, discs and sacrum with apophysis. (not illustrated). Dimensions: 75 x 15 x 15 cm. Sh. wt. 0.70 Kgs.



**CV-51**  
**Complete bony structure of the vertebral column, with pelvis.**

This model shows the vertebrae, discs and complete pelvis. (sacrum, coccyx) Mounted on stand with base. Dimensions: 85 x 44 x 30 cm. Sh. wt. 3.10 Kgs.

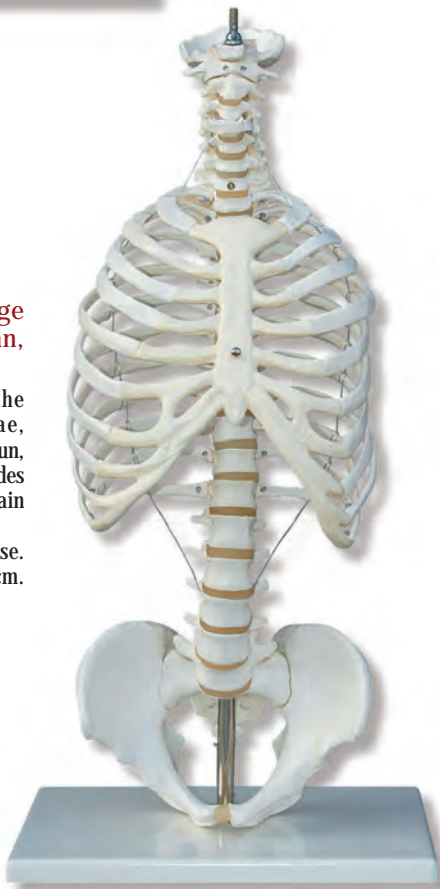
**CV-15**  
**Complete bony structure of the vertebral column with pelvis.**

Same features as model CV-51. but without stand (not illustrated) Dimensions: 84 x 30 x 30 cm. Sh. wt. 2.70 Kgs.

**CV-52**  
**Complete thoracic cage with vertebral column, with pelvis.**

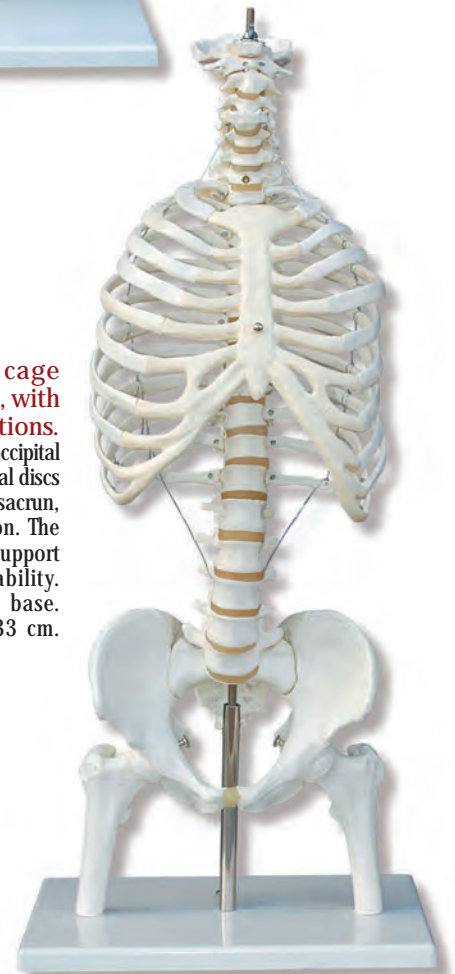
This model reproduces the occipital bone, vertebrae, vertebral discs and pelvis (sacrum, coccyx) The thoracic cage includes a support system to maintain stability.

Mounted on stand with base. Dimensions: 85 x 44 x 30 cm. Sh. wt. 4.10 Kgs.



**CV-46**  
**Complete thoracic cage with vertebral column, with pelvis and femur sections.**

This model reproduces the occipital bone, vertebrae and vertebral discs on a flexible guide, pelvis (sacrum, coccyx) with femur section. The thoracic cage includes a support system to maintain stability. Mounted on stand with base. Dimensions: 86 x 44 x 33 cm. Sh. wt. 4.80 Kgs.



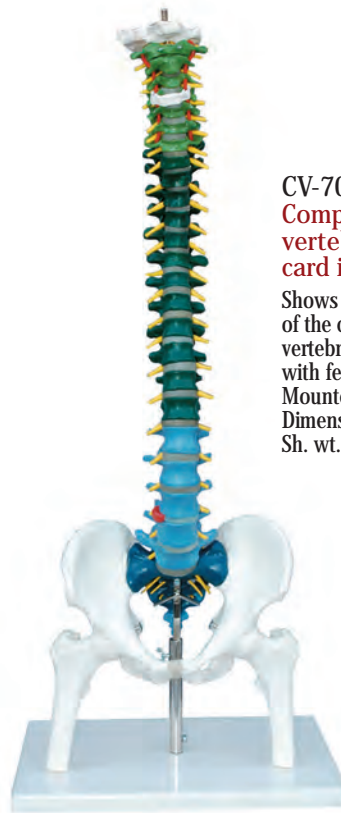
WE CAN PRODUCE SPECIAL ORDER ITEMS AS WELL

# VERTEBRAL COLUMN AND THORACIC CAGES

## (NATURAL SIZE) FLEXIBLE SPINAL COLUMNS



**CV-60**  
**Complete bony structure of the vertebral column with pelvis, key card included.**  
 Shows by colors the 5 different sections of the column: 7 cervical vertebrae, 12 thoracic vertebrae, 5 lumbar vertebrae, sacrum, and coccyx. Mounted on stand with base. Dimensions: 85 x 44 x 30 cm. Sh. wt. 3.10 Kgs.



**CV-70**  
**Complete bony structure of the vertebral column with pelvis, key card included.**  
 Shows by colors the 5 differentiated sections of the column: 7 cervical vertebrae, 12 thoracic vertebrae, 5 lumbar vertebrae, sacrum, coccyx, with femur section. Mounted on stand with base. Dimensions: 85 x 44 x 30 cm. Sh. wt. 4.80 Kgs.

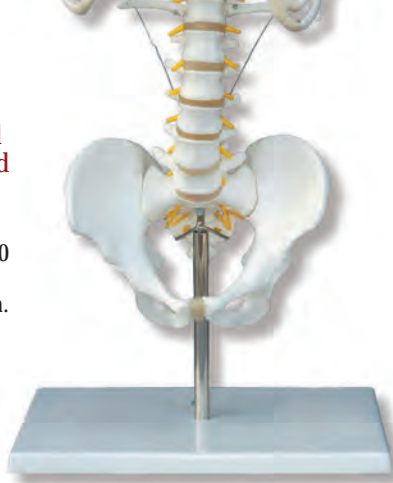
**CV-80**  
**Complete thoracic cage with flexible vertebral column, with pelvis, femur sections, nerve endings and artery.**  
 This model shows the occipital bone, the complete flexible vertebral column, pelvis and the thoracic cage, which includes a support system to maintain stability. Mounted on stand with base. Dimensions: 85 x 44 x 30 cm. Sh. wt. 4.20 Kgs.



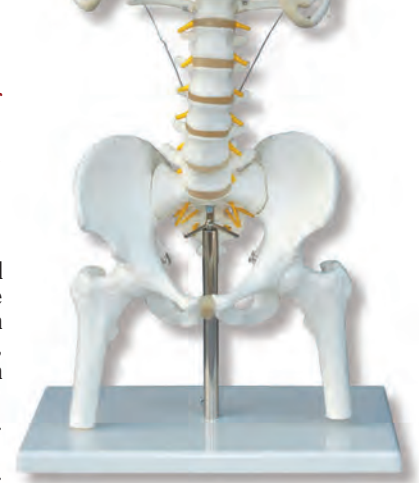
**CV-68**  
**Complete thoracic cage with flexible vertebral column with pelvis, femur sections, nerve endings and artery.**  
 This model shows the occipital bone, the complete flexible vertebral column, pelvis with femur and the thoracic cage, which includes a support system to maintain stability. Mounted on stand with base. Dimensions: 85 x 44 x 30 cm. Sh. wt. 4.80 Kgs.



**CV-81**  
**Complete thoracic cage with flexible vertebral column with pelvis, nerve endings and artery. Hand painted muscle origins and insertions, key card included.**  
 Includes all features of CV-80 (not illustrated). Dimensions: 85 x 44 x 30 cm. Sh. wt. 4.20 Kgs.



**CV-69**  
**Complete thoracic cage with flexible vertebral column with pelvis, femur sections, nerve endings and artery. Hand painted muscle origins and insertions, key card included.**  
 This model shows the occipital bone, the complete flexible vertebral column, pelvis with femur and the thoracic cage, which includes a support system to maintain stability. Mounted on stand with base. (not illustrated). Dimensions: 85 x 44 x 30 cm. Sh. wt. 4.80 Kgs.



WE CAN PRODUCE SPECIAL ORDER ITEMS AS WELL

**Avda. Sistema Solar, 13 – Nave 11  
28830 San Fernando de Henares  
Madrid**

**Telf. +34 918 328 318  
Telf. móvil: +34 657 783 403**

**email: [info@simulacionessanitarias.com](mailto:info@simulacionessanitarias.com)  
<http://www.simulacionessanitarias.com>**