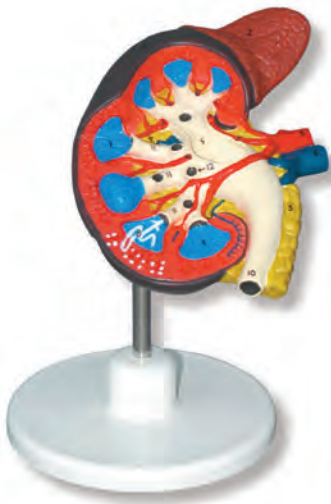


ANATOMY

**Kidney, Liver
Genital and
Urinary System**



KIDNEY AND LIVER MODELS



MR-12
Right kidney, natural size with suprarenal gland, key card included.

Mounted on stand with base.
Dimensions: 15 x 15 x 22 cms. Sh. wt. 0.60 Kgs.



MR-14
Right kidney, natural size, 2 parts, key card included.

This model shows a median section of the kidney and the suprarenal gland.
Mounted on stand with base.
Dimensions: 15 x 15 x 22 cm. Sh. wt. 0.98 Kgs.



MR-16
Right kidney, 3 times, key card included.

A median section allows the perfect study of its functioning. This model shows the renal pelvis, renal calyx, renal pyramids, the loop of Henle, afferent and efferent vessels. This model is not removable.
Mounted on base.
Dimensions: 20 x 30 x 15 cm. Sh. wt. 0.99 Kgs.



MR-18
Right kidney, 3 times, 2 parts, key card included.

The median section allows to verify its functions. It shows a removable suprarenal gland. The most significant parts can be clearly observed.
Mounted on stand with base.
Dimensions: 20 x 30 x 15 cm. Sh. wt. 1.16 Kgs.



NR-22
Nephron. Section of the kidney, 125 times, key card included.

This model allows an accurate and exact identification of the glomerulus, Bowman capsule, the loop of Henle, straight vessels, Bellini's duct, veins and arteries.
Mounted on base.
Dimensions: 20 x 30 x 15 cm. Sh. wt. 0.85 Kgs.



GR-24
Glomerulus, section of the kidney, 750 times, key card included.

This model allows to clearly identify the capsule, membrane and the space of Bowman.
Mounted on base.
Dimensions: 20 x 30 x 15 cm. Sh. wt. 0.83 Kgs.

KIDNEY AND LIVER MODELS



MR-20

Enlarged kidney, nephron and glomerulus, key card included.

This model reproduces the right kidney enlarged 3 times, a kidney section showing in detail the nephron enlarged 125 times and a section of the glomerulus enlarged 750 times, (not removable). Mounted combined on base. Dimensions: 80 x 35 x 15 cm. Sh. wt. 2.84 Kgs.



HT-35

Liver with Gall Bladder, Pancreas and Duodenum enlarged from natural size. Key card included

Excellent relief model shows the liver with: Ducts, Gall bladder, Pancreas, Duodenum, Vessels, Extra-hepatic ducts with gall bladder, Main pancreatic duct and their orifices. Mounted on stand with base.

Dimensions: 22 x 20 x 5 cm.

Sh. wt. 0.95 Kgs.

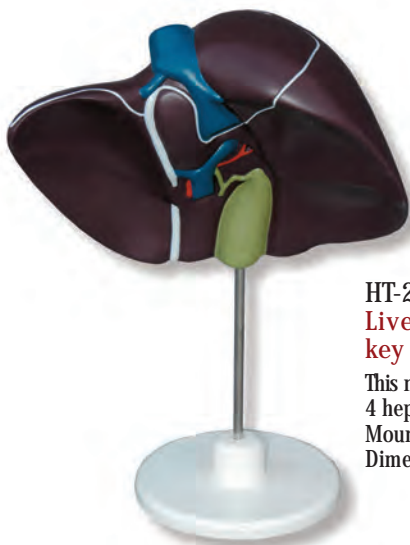


HT-45

Liver and Gall Bladder, key card included.

The ventral surface of this replica is dissected to expose major blood vessels and bile ducts in deep relief. Color-coding clarifies the complex vascular network, with contrasting colors differentiating the portal vein and its branches, the gall bladder and bile ducts, the hepatic artery and the hepatic veins.

Dimensions: 36 x 31 x 18 cm. Sh. wt. 1.90 Kgs.



HT-25

Liver with Gall Bladder, natural size, key card included

This model reproduces the gall bladder, vessels and the 4 hepatic lobes.

Mounted on stand with base.

Dimensions: 20 x 20 x 15 cm. Sh. wt. 0.67 Kgs.

GENITAL AND URINARY SYSTEM MODELS



Model PF-16
Median section of the female pelvis, natural size, 2 parts, key card included.

This model shows in detail the dorsal and ventral musculature with the lumbar vertebra, as well as the intestine, rectum, bladder, uterus and the kidney section.

Mounted on stand with base
 Dimensions: 40 x 32 x 40 cm.
 Sh. wt. 3.60 Kgs.



PM-12
Median section of the male pelvis, natural size, 2 parts, key card included.

This model reproduces the dorsal and ventral musculature with lumbar vertebra, as well as the intestine, rectum and bladder with prostate, deferent conduit and a kidney section.

Mounted on stand with base.
 Dimensions: 40 x 32 x 40 cm.
 Sh. wt. 3.75 Kgs.



PM-10
Median section of the male pelvis, natural size, 2 parts, key card included.

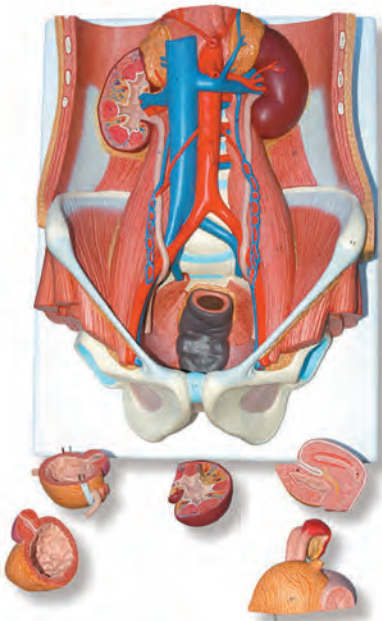
This model reproduces the dorsal and ventral musculature with lumbar vertebra, as well as the intestine, rectum and bladder with prostate, deferent conduit and kidney section.
 Mounted on stand with base.
 Dimensions: 42 x 32 x 22cm.
 Sh. wt. 3.05 Kgs.



PF-14
Median section of the female pelvis, natural size, 2 parts, key card included.

Natural size, 2 parts, numbered with key card. This model reproduces in detail the dorsal and ventral musculature with the lumbar vertebra. As well as the intestine, rectum, bladder, uterus, and the kidney section.
 Mounted on stand with base.
 Dimensions: 42 x 32 x 22 cm.
 Sh. wt. 2.85 Kgs.

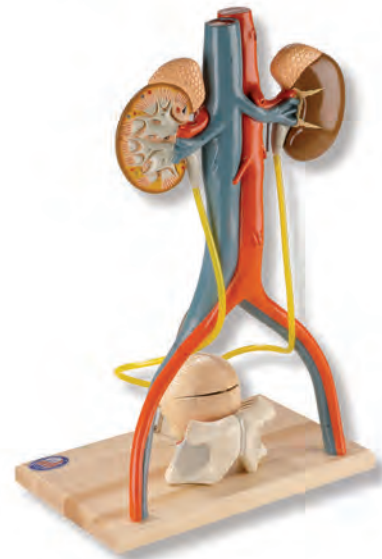
GENITAL AND URINARY SYSTEM MODELS



UB-32

Dual-Sex Urinary system, natural size, 6 parts, key card included.

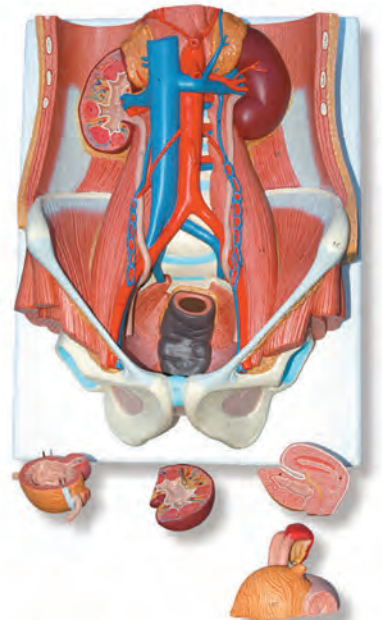
This model shows the pelvic cavity with 2 kidneys, a part of one of the kidneys is dissectible. it can be observed in detail the musculature and the pelvic vessels, male bladder (2 parts), female bladder with uterus (2 parts). Both are exchangeable Mounted on stand with base.
Dimension: 42 x 32 x 18 cm.
Sh. wt. 2.80 Kgs.



UB-26

Male Urinary system, natural size, 3 parts, key card included.

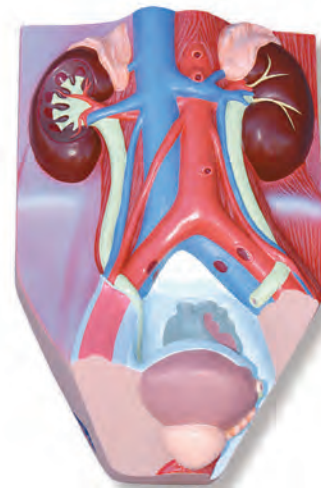
Model of the male urinary system and its blood supply is freestanding, enabling study from all aspects. The kidneys, adrenals and blood vessels. A section of the pelvic bones with pubic symphysis, lower portion of the bladder and prostate. The upper portion of the bladder and prostate. Flexible plastic tubing represents the ureters. Mounted on stand with base.
Dimensions: 50 x 34 x 22 cm.
Sh. wt. 2.10 Kgs.



UB-31

Female Urinary system, natural size. 5 parts, key card included.

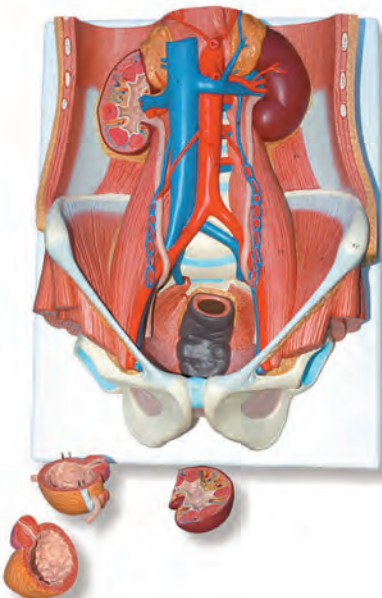
Pelvic cavity with kidneys, one of the kidneys is dissectible. it can be observed in detail the musculature and the pelvic vessels, female bladder with uterus (3 parts). Mounted on stand with base.
Dimensions: 42 x 32 x 18 cm.
Sh. wt. 2.72 Kgs.



UB-22

Male Urinary system, 2/3 its natural size, key card included.

Model shows the structures of the retroperitoneal cavity in the following details: Inferior vena cava, renal veins, aorta with its branches, iliac vessels, ureter, urinary bladder, prostate, adrenal gland, rectum, musculature, the right kidney is opened. Mounted on stand with base.
Dimensions: 28 x 20 x 12 cm.
Sh. wt. 1.10 Kgs.



UB-30

Male Urinary system, natural size, 4 parts, key card included.

Pelvic cavity with kidneys, one of the kidneys is dissectible. This model shows in detail the musculature, pelvic vessels and the male bladder (2 parts). Mounted on stand with base.
Dimensions: 42 x 32 x 18 cm.
Sh. wt. 2.70 Kgs.

GENITAL AND URINARY SYSTEM MODELS



GN-15
 Unisex genital organs (without external anatomical sex),
 natural size, 2 parts, key card included.
 The bladder genital organs of a part of the genital bladder.
 Mounted on base
 Dimensions: 15 x 15 x 25 cm. Sh. wt. 0.70 Kgs.



GF-13.
 Female genital organs, natural size, 3 parts, key card included.
 This model shows in detail the musculature, bladder and uterus as well as an
 embryo in the 3rd month of pregnancy.
 Mounted on stand with base.
 Dimensions: 15 x 15 x 25 cm. Sh. wt. 0.76 Kgs.



GF-16
 Female genital organs (without external anatomical sex)
 Natural size, 3 parts, key card included.
 The female bladder with uterus can be observed in detail.
 Monted on base.
 Dimensions 15 x 15 x 25 cm. Sh. wt. 0.72 kgs.



GM-11
 Male genital organs, natural size, 4 parts,
 key card included.
 Presented in cross section. This model shows in detail the musculature, bladder,
 testicles, and a penis . The penis can be removable into 2 parts.
 Mounted on stand with base.
 Dimensions: 15 x 15 x 25 cm. Sh. wt. 0.89 Kgs.

**Avda. Sistema Solar, 13 – Nave 11
28830 San Fernando de Henares
Madrid**

**Telf. +34 918 328 318
Telf. móvil: +34 657 783 403**

**email: info@simulacionessanitarias.com
<http://www.simulacionessanitarias.com>**