

ANATOMY

HEADS



HEAD MODELS

CH-01

Human head, natural size, 2 parts, key card included.

This model shows the facial bone structure of both the skull and the brain, left plane. The eye with optic nerve is removable. Mounted on base. Dimensions: 20 x 20 x 25 cm. Sh. wt. 1,00 Kgs.

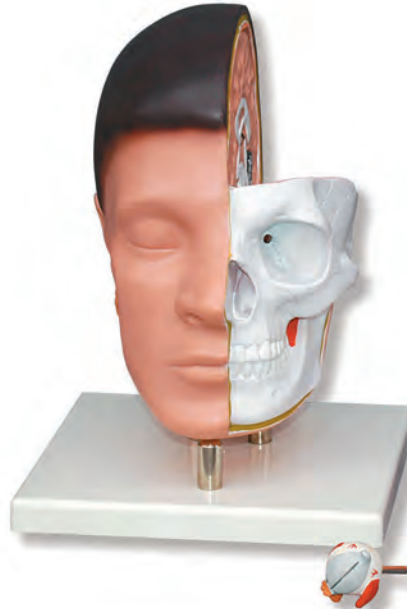


CH-01

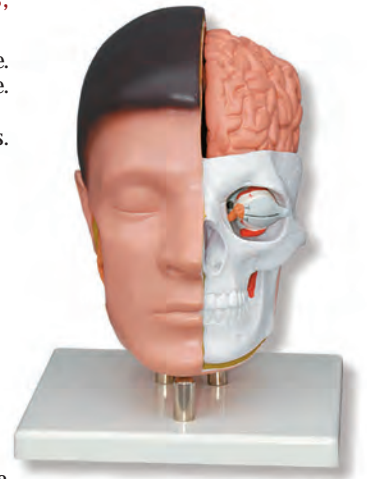
CH-02

Human head, natural size, 3 parts, key card included.

This model shows the skull facial bone structure, left plane. Half-brain and the eye with optic nerve are removable. Mounted on base. Dimensions: 20 x 20 x 25 cm. Sh. wt. 1,20 Kgs.



CH-02



CH-03

Human head, natural size, 3 parts, key card included.

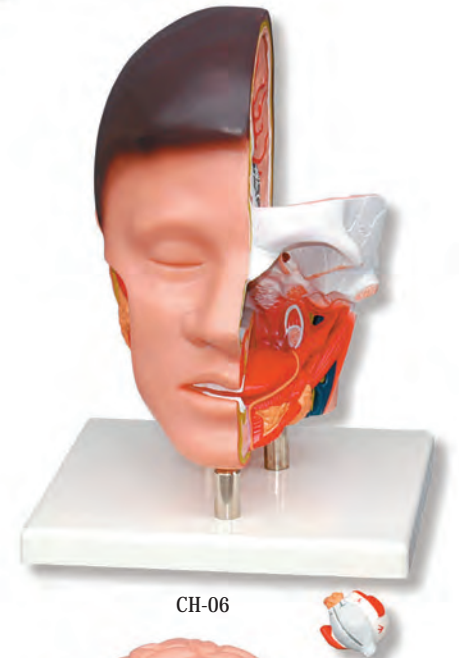
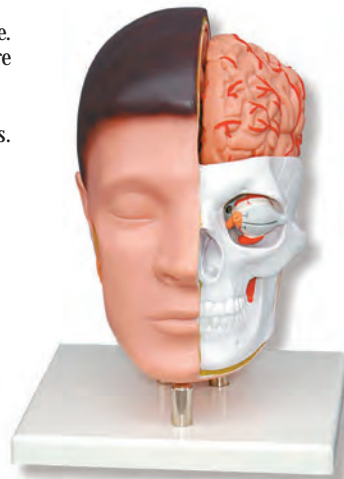
This model shows the skull facial bone structure, left plane. Half-brain with arteries and eye with optic nerve are removable.

Mounted on base.

Dimensions: 20 x 20 x 25 cm. Sh. wt. 1,00 Kgs.



CH-03



CH-06

CH-06

Human head, natural size, 3 parts, key card included.

This model shows the skull base and the nasal-buccal cavities. Half-brain and the eye with optic nerve are removable.

Mounted on base.

Dimensions: 20 x 20 x 25 cm. Sh. wt. 1,30 Kgs.

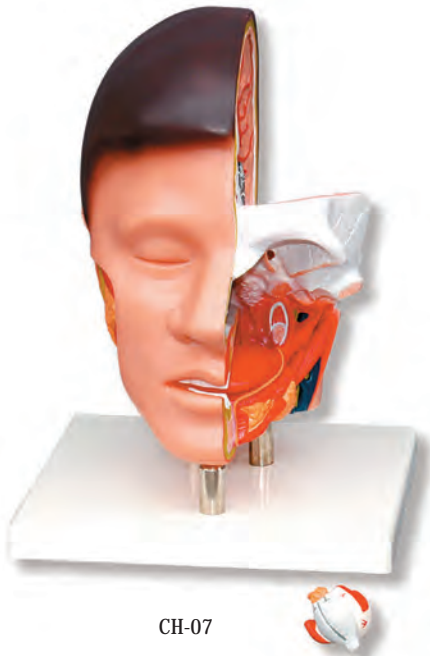
HEAD MODELS

CH-07

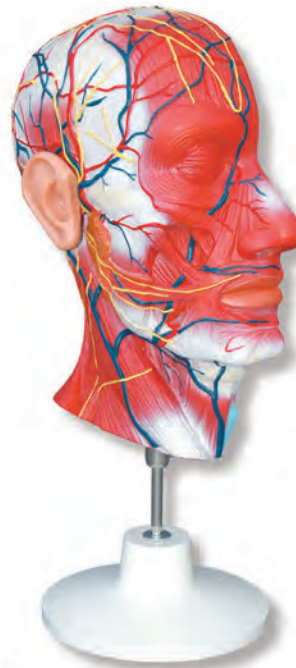
Human head, natural size, 3 parts, key card included.

This model shows the skull base and the nasal -buccal cavities. Half-brain with arteries and eye with optic nerve are removable. Mounted on base.

Dimensions: 20 x 20 x 25 cm. Sh. wt. 1,30 Kgs.



CH-07



CH-20



CH-20

Half-head showing in detail the most relevant arteries, veins, nerves and muscles, natural size, key card included.

This model reproduces the head and neck left plane, showing the musculature, nervous and circulatory structure. Presented in one piece, it cannot be disassembled. Mounted on base.

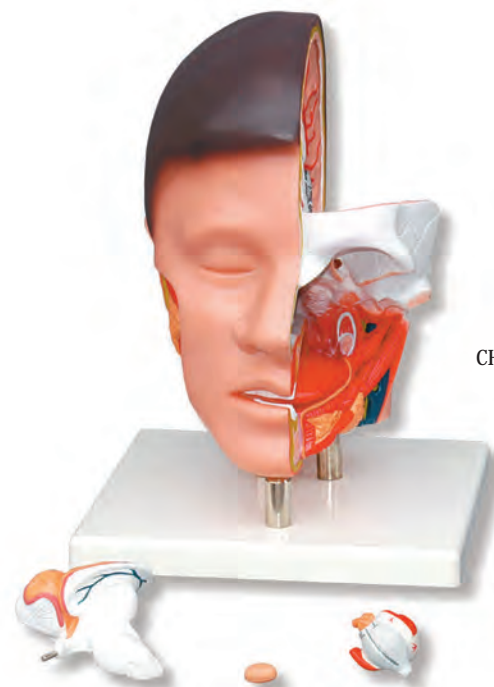
Dimensions: 24 x 20 x 45 cm. Sh. wt. 1,20 Kgs.

CH-08

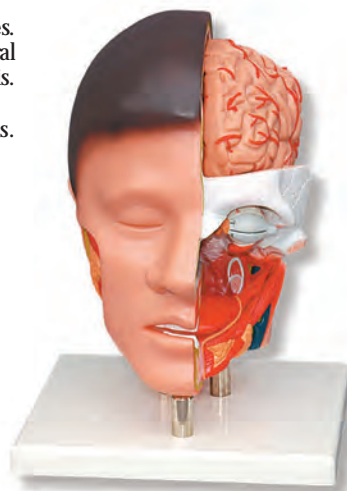
Human head, natural size, 7 parts, key card included.

This model shows the skull base and the nasal-buccal cavities. Half-brain with arteries is removable into frontal lobe, temporal and occipital lobe, cerebellum, brain stem and hypophysis. Mounted on base.

Dimensions: 20 x 20 x 25 cm. Sh. wt. 1,40 Kgs.



CH-08



CH-22

Median section of the head and brain, showing the most important surface arteries, natural size, 10 parts, key card included.

This model reproduces the brain with arteries. It can be disassembled into 9 parts: 2 occipital-temporal lobes, 2 parietal-frontal lobes, cerebellum (2 parts), encephalic trunk (2 parts) and hypophysis. On the skull base it shows a representation of the dura mater, cranial and basilar arteries.

Mounted on base.

Dimensions: 20 x 20 x 25 cm. Sh. wt. 1,70 Kgs.

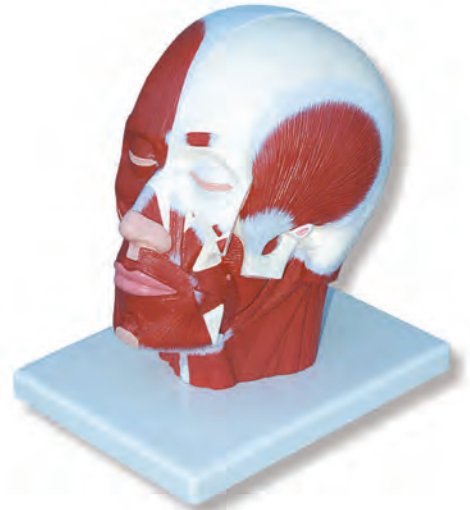
HEAD MODELS



CH-13
Median section of the human head, natural size, key card included.
 This model shows a vertical section of the anatomical structure of the human head, not removable. Mounted on base.
 Dimensions: 28 x 25 x 6 cm. Sh. wt. 1,60 Kgs.



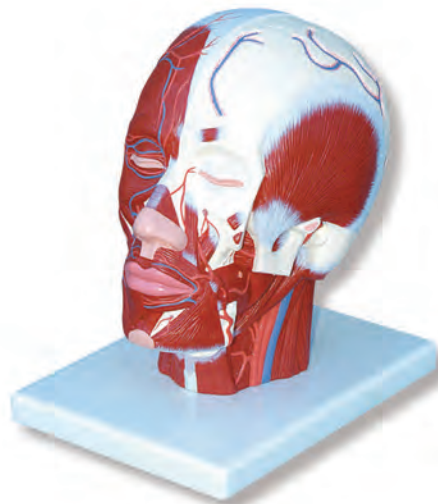
CH-18
Frontal and median section of the head, natural size, key card included.
 This model shows the anatomical structure by means of a horizontal and vertical section of the human head. Presented in one piece, not removable. Mounted on base.
 Dimensions: 41 x 31 x 6 cm. Sh. wt. 3,20 Kgs.



CH-26
Head Musculature, key card included.
 Representation of the superficial musculature of head and neck showing: Parotid gland, submandibular gland (right half), deep musculature (left half), lower jaw partially exposed.
 Dimensions: 24 x 18 x 24 cm. Sh. wt. 1,30 Kgs.



CH-12
Frontal section of the human head, natural size, key card included.
 This model shows a horizontal section of the anatomical structure of the human head. Presented in one piece, not removable. Mounted on base.
 Dimensions: 38 x 25 x 6 cm. Sh. wt. 1,60 Kgs.



CH-27
Head Musculature including Blood Vessels, key card included.
 Representation of the superficial musculature with: Parotid gland, submandibular gland (right half), deep musculature (left half), lower jaw partially exposed, displaying blood vessels.
 Mounted on base.
 Dimensions: 24 x 18 x 24 cm. Sh. wt. 1,30 Kgs.



CH-28
Head Musculature including Nerves, key card included.
 Representation of the superficial musculature with: Parotid gland, submandibular gland (right half), deep musculature (left half), lower jaw partially exposed, displaying nerves.
 Mounted on base.
 Dimensions: 24 x 18 x 24 cm. Sh. wt. 1,30 Kgs.

HEAD MODELS

CH-81

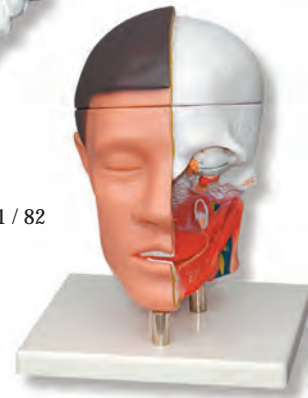
Human head, natural size, 12 parts, key card included.

This model shows the skull base and the nasal buccal cavitis. Removable skull cap and opening in the occipital bone. Half brain with arteries (9 parts) and eye with optic nerve and muscles are remove. Mounted on base.

Dimensions: 20 x 20 x 25 cm. Sh. wt. 2,30 Kgs.



CH-81 / 82



CH-82

Human head, natural size, 9 parts, key card included.

This model shows the skull base and the nasal buccal cavitis. Removable skull cap and opening in the occipital bone. Half brain with arteries (6 parts) and eye with optic nerve and muscles are remove. Mounted on base.

Dimensions: 20 x 20 x 25 cm. Sh. wt. 2,00 Kgs.

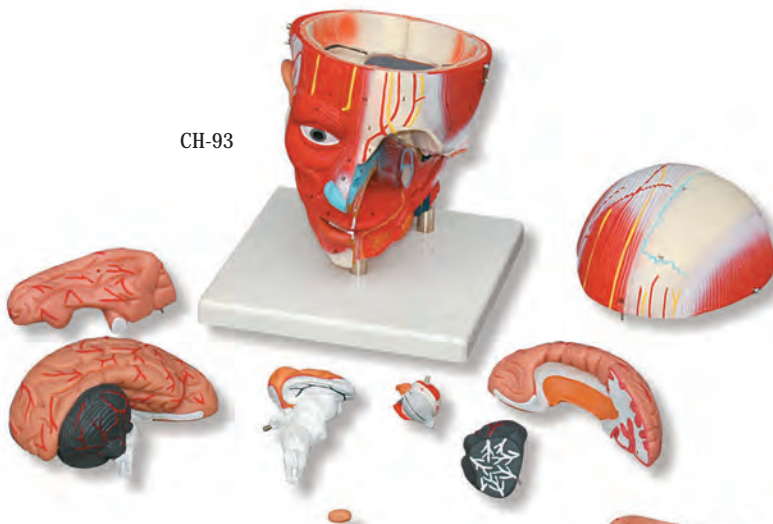


CH-95

Muscled Human head, natural size. 12 parts, key card included.

This model shows the skull base and the nasal buccal cavitis. With facial musculature, removable skull cap and opening in the occipital bone. Half brain with arteries (9 parts) and eye with optic nerve and muscles are remove. Mounted on base.

Dimensions: 20 x 20 x 25 cm. Sh. wt. 2,30 Kgs.



CH-93

CH-93

Muscled Human head, natural size, 9 parts, key card included.

This model shows the skull base and the nasal buccal cavitis. With facial musculature, removable skull cap and opening in the occipital bone. Half brain with arteries (6 parts) and eye with optic nerve and muscles are remove. Mounted on base.

Dimensions: 20 x 20 x 25 cm. Sh.wt. 2,00 Kgs.



CH-95

**Avda. Sistema Solar, 13 – Nave 11
28830 San Fernando de Henares
Madrid**

**Telf. +34 918 328 318
Telf. móvil: +34 657 783 403**

**email: info@simulacionessanitarias.com
<http://www.simulacionessanitarias.com>**