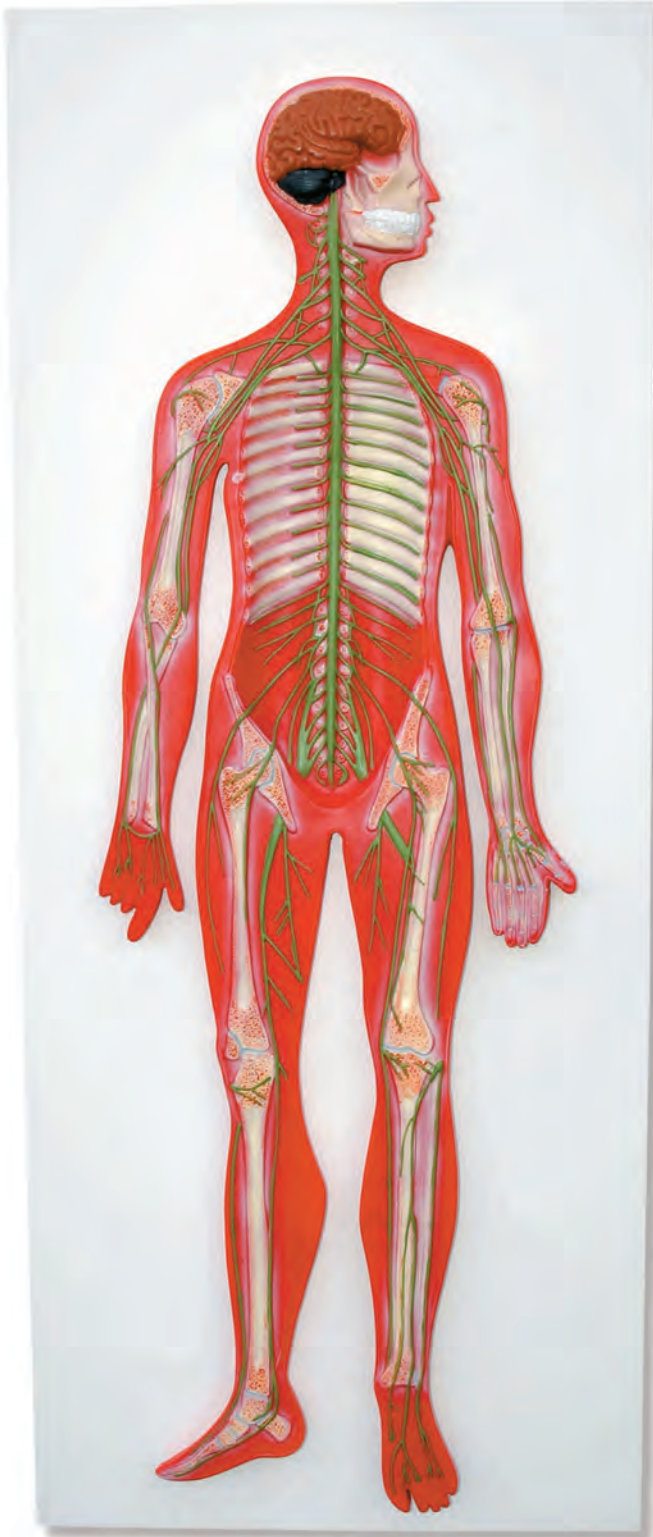


ANATOMY

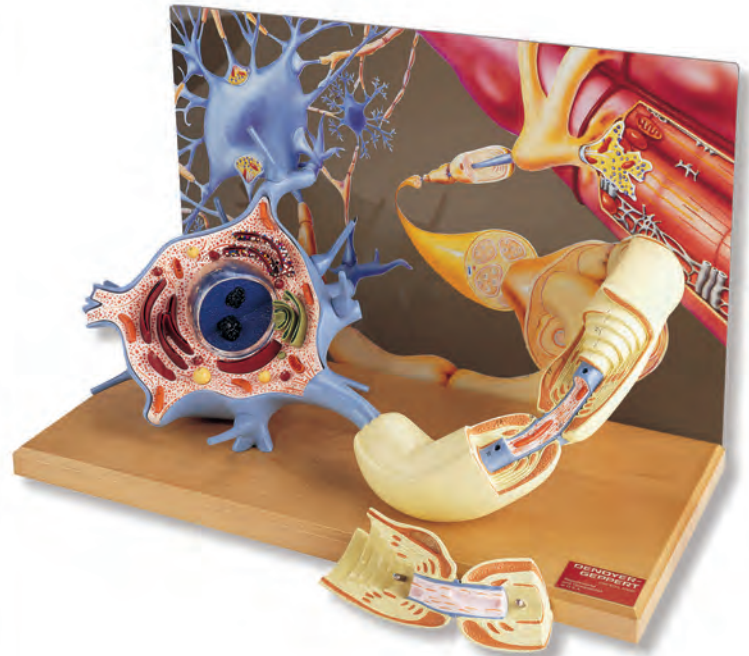
**Nervous System
Eyes and
Ears**



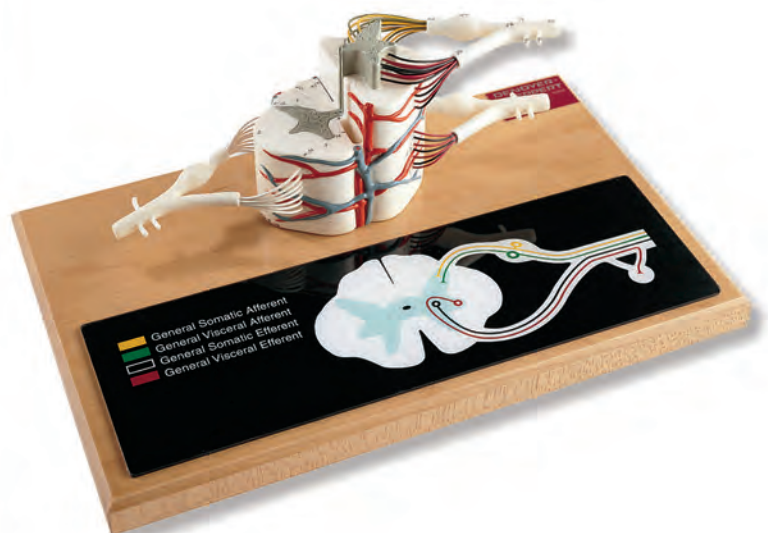
NERVOUS SYSTEM MODELS



RN-10
Relief Nervous system, 1/2 natural size. Presented in one piece, key card included.
 This model shows: a vertical section of the central and peripheral nervous system.
 Mounted on base.
 Dimensions: 90 x 35 x 8 cm. Sh. wt. 3.60 Kgs.



NE-11
Motor neuron 2500 times natural size, key card included.
 With the membranous envelope cut away, the cytological ultrastructure, organelles and inclusions within the cell body are depicted in contrasting colors. A section of the axon is removable to expose the enveloping myelin sheath and neurolemma, as well as the Schwann cell that forms them. Dendrites of the neuron extend into the background, and synaptic vesicles carrying neurotransmitters can be seen via a cutaway view.
 Mounted on base.
 Dimensions: 43 x 20 x 28 cm. Sh. wt.: 3.40 Kg.



NC-29
Spinal Cord, 6 times natural size, key card included
 Replicates a segment of the upper thoracic spinal cord. Sectioned both longitudinally and in cross section, a portion of white matter of the right half has been cut away to expose the anterior and posterior nerve roots.
 Mounted on base.
 Dimensions: 36 x 27 x 27 cm. Sh. wt. 0.80 Kgs.

EYE MODELS



LO-05
Eye, 3 times, 6 parts, key card included.

This model is removable into: Both halves of sclera with cornea and eye muscle attachments, both halves of the choroid with iris and retina, lens and vitreous humour.
 Mounted on base.
 Dimensions: 10 x 10 x 15 cm.
 Sh. wt. 0.20 Kgs.



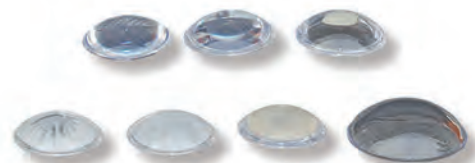
LO-04
Eye 3 times, 3 parts, key card included.
 Model with cut-away to show inner anatomy, including optic nerve and disc, macula, retina, central retinal artery and vein.
 Lens and cornea are removable.
 Mounted on base.
 Dimensions: 10 x 10 x 13 cm. Sh. wt. 0.50 Kgs.



LO-08
Cornea Eye Cross-Section 3 times, 6 parts, key card included.
 This model includes 4 interchangeable corneas that show various cornea conditions including: Bullous Keratopathy, Fuch's Endothelial Dystrophy, Keratoconus and Normal.
 Mounted on base.
 Dimensions: 10 x 10 x 13 cm. Sh. wt. 0.50 Kgs.



LO-06
Cataract Eye 3 times, 8 parts, key card included.
 Model includes interchangeable lenses that show various types of cataract conditions including: subcapsular, capsular, mature, cortical and nuclear. The education card highlights the visual effect of cataracts.
 Mounted on base
 Dimensions: 10 x 10 x 13 cm. Sh. wt. 0.50 Kgs.



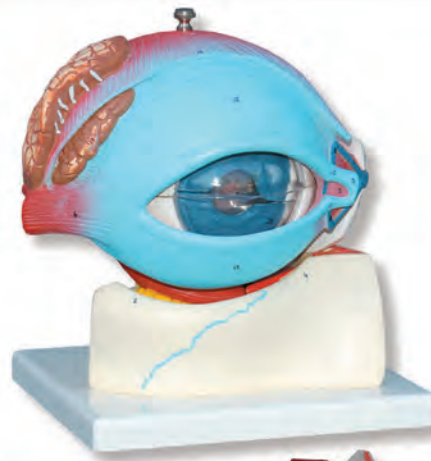
EYE MODELS



LO-10
Eye, 5 times, 6 parts,
key card included.

This model shows: the choroid membrane, sectioned in 2 parts, the sclerotic membrane, in 2 parts, lens and vitreous body. Mounted on stand with base.

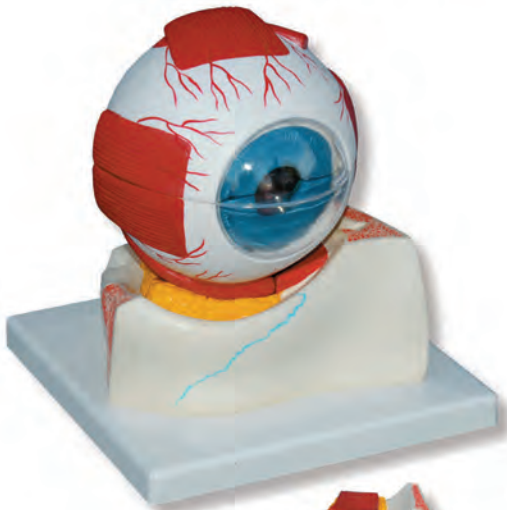
Dimensions: 15 x 15 x 20 cm.
 Sh. wt. 0.70 Kgs.



LO-12
Eye, 5 times, 8 parts, key card included.

This model shows: the Eye lid and lacrimal organs, the lower bone of the ocular cavity, choroid membrane sectioned in 2 parts, sclerotic membrane in 2 parts, lens and vitreous body. Mounted on stand with base.

Dimensions: 20 x 20 x 25 cm. Sh. wt. 1.70 Kgs.

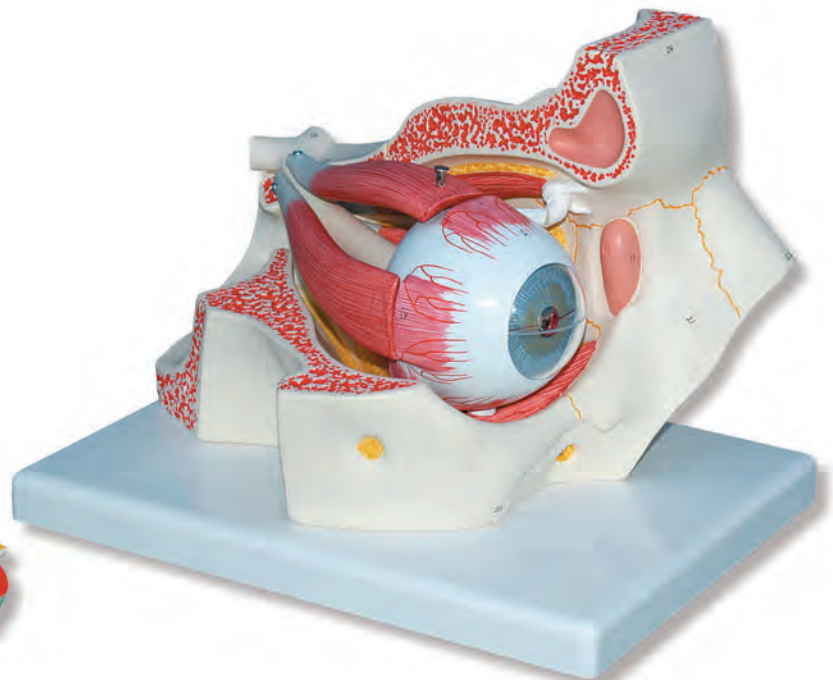


LO-11
Eye, 5 times, 7 parts, key card included.

This model shows: the choroid membrane, sectioned in 2 parts, the sclerotic membrane, in 2 parts, lens, vitreous body and the lower bone of the ocular cavity.

Mounted on stand with base.

Dimensions: 20 x 20 x 25 cm. Sh. wt. 1.30 Kgs.



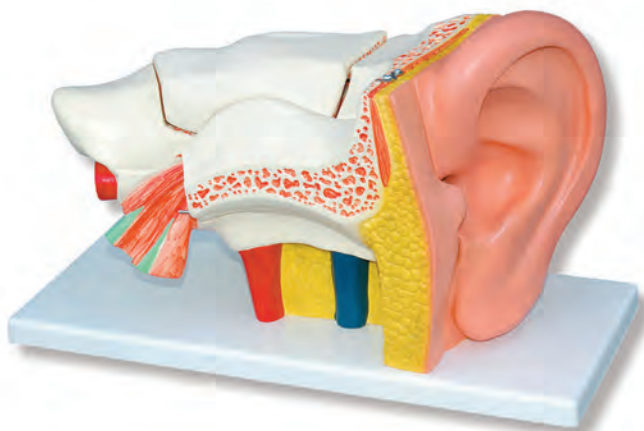
LO-14
Eye, 3 times, 7 parts, key card included.

This model shows the optic nerve in its natural position in the bony orbit of the eye (floor and medial wall). The eye is removable into: both halves of sclera with cornea and eye muscle attachments, both halves of the choroid with iris and retina, lens and vitreous humour.

Mounted on base.

Dimensions: 18 x 26 x 19 cm. Sh. wt. 2.80 Kgs.

EAR MODELS



OR-25

Ear, 3 times, 6 parts, key card included.

This model shows: the external auditory duct, middle and inner ear with dissectible bones (2), the eardrum with anvil and hammer.

Mounted on stand with base.

Dimensions: 37 x 20 x 35 cm. Sh. wt. 1.80 Kgs.



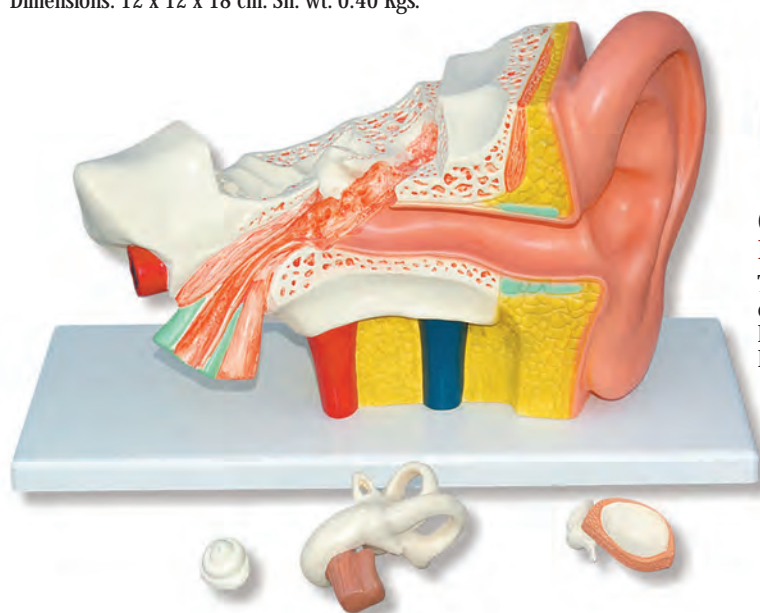
OR-05

Ear, natural size, key card included.

This model shows semi-circular canals and cochlea of the inner ear; auditory ossicles from the middle ear; tympanic membrane and temporal and tympani muscles.

Mounted on stand with base.

Dimensions: 12 x 12 x 18 cm. Sh. wt. 0.40 Kgs.



OR-20

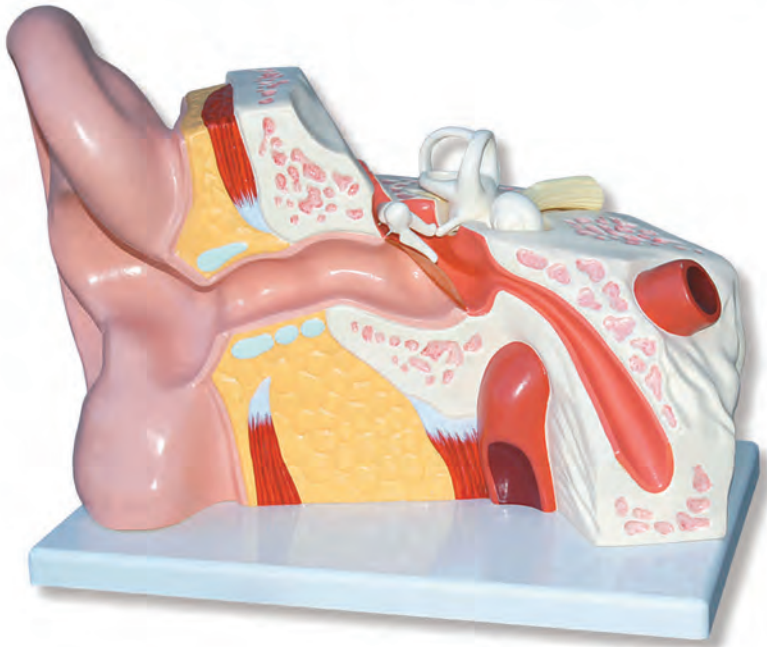
Ear, 3 times, 4 parts, key card included.

This model shows: the external auditory duct, the middle and internal ear; eardrum with anvil and hammer.

Mounted on stand with base.

Dimensions: 37 x 20 x 35 cm. Sh. wt. 1.40 Kgs.

EAR MODELS



OR-80

Ear, 5 times, 3 parts, key card included.

This model is large enough to allow visibility from any part of the classroom. Representation of outer, middle and inner ear. Removable auditory ossicles and labyrinth with the cochlea and vestibulocochlear nerve. Mounted on stand with base.

Dimensions: 26 x 42 x 26cm. Sh. wt. 3.20 Kgs.



OR-40

Ear, 5 times, 8 parts, key card included.

The extractable labyrinth is dissectible into three portions. Half of it, consisting of the semicircular canals and vestibule, demonstrates the sense of balance. Transparent tubing with colored liquid represents two of the semicircular canals. An air bubble in each will move when tipped, demonstrating the canals' function in equilibrium. The other half of the labyrinth, upon removal, shows the vestibular and cochlear nerves, which join to form the auditory nerve. The cochlea itself separates into halves to reveal cochlear, vestibular and tympanic ducts and the branching of the cochlear nerve. Mounted on stand with base.

Dimensions: 43 x 28 x 20 cm. Sh. wt. 4.30 Kgs.



**Avda. Sistema Solar, 13 – Nave 11
28830 San Fernando de Henares
Madrid**

**Telf. +34 918 328 318
Telf. móvil: +34 657 783 403**

**email: info@simulacionessanitarias.com
<http://www.simulacionessanitarias.com>**