

ANATOMY

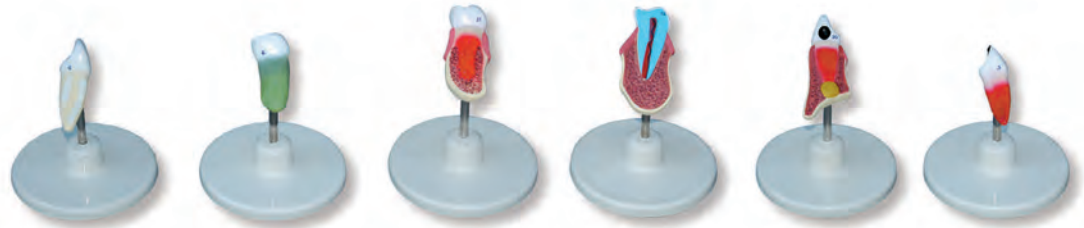
Teeth Models



TEETH MODELS

Odontopathies tooth diseases, 3 times, key card included. Mounted individually on stand with base.

The individual dimensions and weight of each model are:
Dimensions: 10 x 10 x 6 cm.
Sh. wt. 0.20 kgs.



OD-11 Cement Proliferations. OD-12 Total necrosis. OD-13 Granuloma in cross section. OD-14 Suppuration of the tooth socket in cross sect. OD-15 Fistula abscess (granuloma) in cross section. OD-16 Acute apical inflammation



OD-17 Gingival fistula in cross section. OD-18 Maxillary cyst in cross section. OD-19 Dental calculi in cross section. OD-20 Healthy molar tooth. OD-21 Chronic periodontitis. OD-22 Apical necrosis. OD-23 Radiculodental abscess.



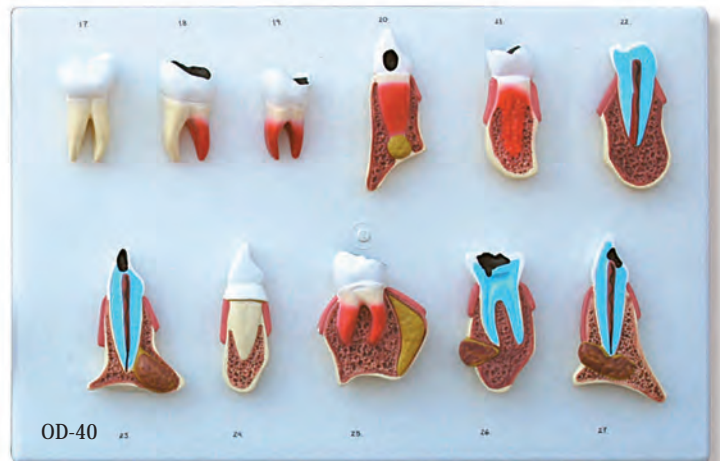
OD-24 Ulcer on hard tissues (dentine and dental enamel) in cross section. OD-25 Bone necrosis in cross section. OD-26 Polyp of the dental pulp in cross section. OD-27 Total dental gangrene. OD-28 Purulent inflammation of the dental pulp in cross section. OD-29 Acute inflammation of the dental pulp in cross section. OD-30 Beginning of acute inflammation of the dental pulp in cross section



OD-31 Healthy molar tooth in cross section. OD-32 Advanced dental caries. OD-33 Healthy incisor tooth in cross section. OD-34 Rachitic incisor tooth. OD-35 Beginning of dental caries in cross section. OD-36 Caries of the neck of the tooth. OD-37 Healthy premolar tooth.



OD-50 Set of 27 odontopathies, 3 times, key card included. Models from OD-11 to OD-37 (included). Dimensions: 60 x 40 x 20 cm. Sh. wt. 2.90 Kgs.



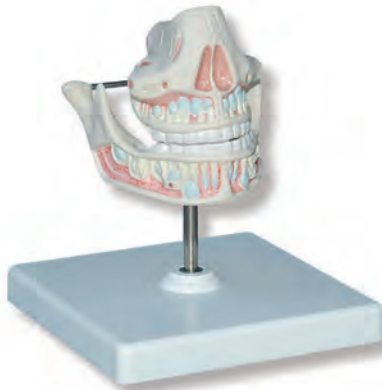
OD-40 Relief Model of 27 odontopathies, corresponding to the respective dental diseases, 3 times, with key card, not removable. It cannot be dissectible. Mounted on stand with base. Dimensions: 42 x 35 x 10 cm. Sh. wt. 2.60 Kgs.

TEETH MODELS



MA-15
Adult Dentures, natural size.

Tooth roots, spongiosa, vessels, and nerves are exposed. The lower jaw is movable. Mounted on stand with base.
Dimensions: 16 x 14 x 14 cm. Sh. wt. 1.00 Kgs.



MN-10
Milk Dentures, natural size.

Upper and lower jaw are opened to show the arrangement of the remaining teeth. Mounted on stand with base.
Dimensions: 16 x 14 x 14 cm. Sh. wt. 0.70 Kgs.



MI-20
Lower Jaw, 3 times, 6 parts, key card included.

This model shows the teeth roots, nerves and blood vessels. One incisor tooth and one molar tooth are dissectible. All of the teeth are covered by a removable top.
Mounted on stand with base.
Dimensions: 30 x 20 x 40 cm. Sh. wt. 1.60 Kgs.



MI-30
Lower Jaw with muscular insertions, 5 times, 14 parts, key card included.

This model shows the jaw joints and muscles. The teeth can be removed and taken apart. One canine tooth and one molar tooth are dissectible.
Mounted on stand with base.
Dimensions: 40 x 30 x 35 cm. Sh. wt. 3.00 Kgs.



DA-25
Upper molar tooth, 16 times, 6 parts, key card included.

This model shows the caries evolution (3 parts), through a cross section of the crown, 2 roots and the pulp. Mounted on stand with base.
Dimensions: 20 x 20 x 26 cm. Sh. wt. 2.10 Kgs.



TEETH MODELS

Series of teeth enlarged 8 times, from upper and lower jaw, key card included. Mounted individually on stand with base. The individual dimensions and weight of each model are:
Dimensions: 15 x 15 x 15 cm, sh. wt. 0.30 kgs.



DA-01
Lower incisor tooth
2 parts.

DA-02
Lower Canine tooth
2 parts.

DA-03
Lower Premolar tooth
1 part.

DA-04
Lower Molar tooth, with caries
2 parts.

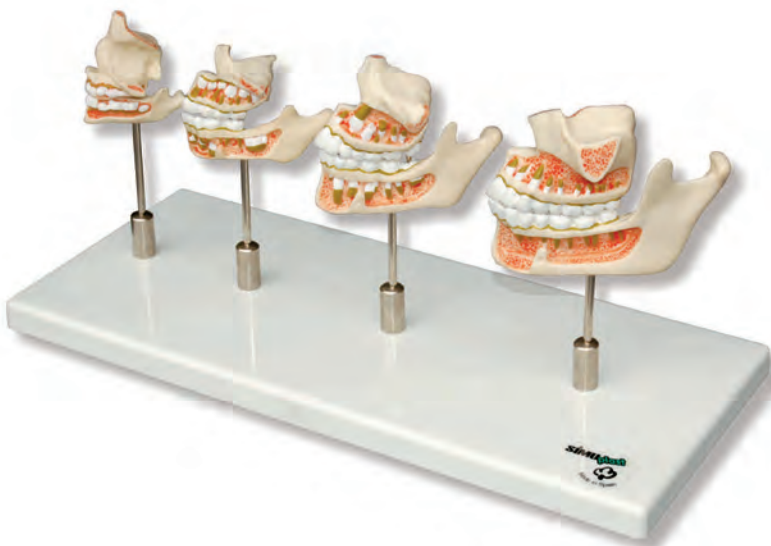
DA-05
Upper Molar tooth
3 roots, 3 parts.



DA-10
Set of teeth, 5 Models, 8 times, key card included.
Models from DA-01 to DA-05, (included)
Dimensions: 20 x 20 x 16 cm. Sh. wt. 1.80 Kgs.

OD-10
Development of the upper and lower jaw, natural size, key card included.

This model represents four steps of the dental development: the denture of a new-born baby, a child of about 6 years of age, a child of about 9 years of age and an adult.
Dimensions: 25 x 15 x 35 cm. Sh. wt. 0.70 Kgs.



Dental development of the lower and upper jaw, natural size, 8 parts, key card, included.
This model shows the dental evolution by means of the median section of the upper and lower jaw.



OD-01
Denture of a new-born baby
2 parts



OD-02
Denture of a child of about 6 years
2 parts.



OD-03
Denture of a child of about 9 years
2 parts.



OD-04
Denture of an adult
2 parts.

Model OD-05
Set of 4 models of the dental development, natural size, key card included.
From OD-01 Model to OD-04 Model
Dimensions: 25 x 15 x 35 cm. Sh. wt. 0.80 Kgs.

TEETH MODELS



MD-09
Dental pathology 2 times, 21 parts.

Illustration of a lower jaw with 21 removable teeth of an adult magnified 2 times. One half of the model shows eight healthy teeth and healthy gums. The other half of the model shows the following dental diseases: Dental plaque, dental calculus (tartar), periodontitis, inflammation of the root and fissure, approximal and smooth surface caries.

One part of the front bone section can be removed to view the roots, vessels and nerves. Two molars are sectioned along the length to show the inside of the tooth. Mounted on stand with base. Dimensions: 17,5x26x18,5 cm. Sh. wt. 0.80 Kgs.



HD-25

HD-15



HD-15
Proper dental care, 2 times, key card included.

This model shows the denture and palate of an adult. A suitable tooth brush is included. Opening gap of the removable jaws. Dimensions: 20 x 25 x 15 cm. Sh. wt. 0.90 Kgs.

HD-25
Proper dental care, 4 times, key card included.

This model shows the denture and palate of an adult. A large tooth brush is included. Opening gap of the removable jaws. Dimensions: 20 x 20 x 15 cm. Sh. wt. 0.90 Kgs.



PD-25
Teeth cross-Section highly magnified.

Model of premolars and molars featuring many common dental problems, some of which are: abscess, advanced periodontitis, cavity, crown, decay, filling, gingivitis, plaque, and severe bone loss. Key card included. Mounted on stand with base

Dimensions: 20 x 20 x 8 cm. Sh. wt. 0.40 Kgs.



DA-20
Set of 8 Teeth, 3 times, 10 parts, key card included.

Models from DA-11 to DA-18 (both included), storage case included. Dimensions: 25 x 15 x 5 cm. Sh. wt. 0.90 Kgs.

**Avda. Sistema Solar, 13 – Nave 11
28830 San Fernando de Henares
Madrid**

**Telf. +34 918 328 318
Telf. móvil: +34 657 783 403**

**email: info@simulacionessanitarias.com
<http://www.simulacionessanitarias.com>**